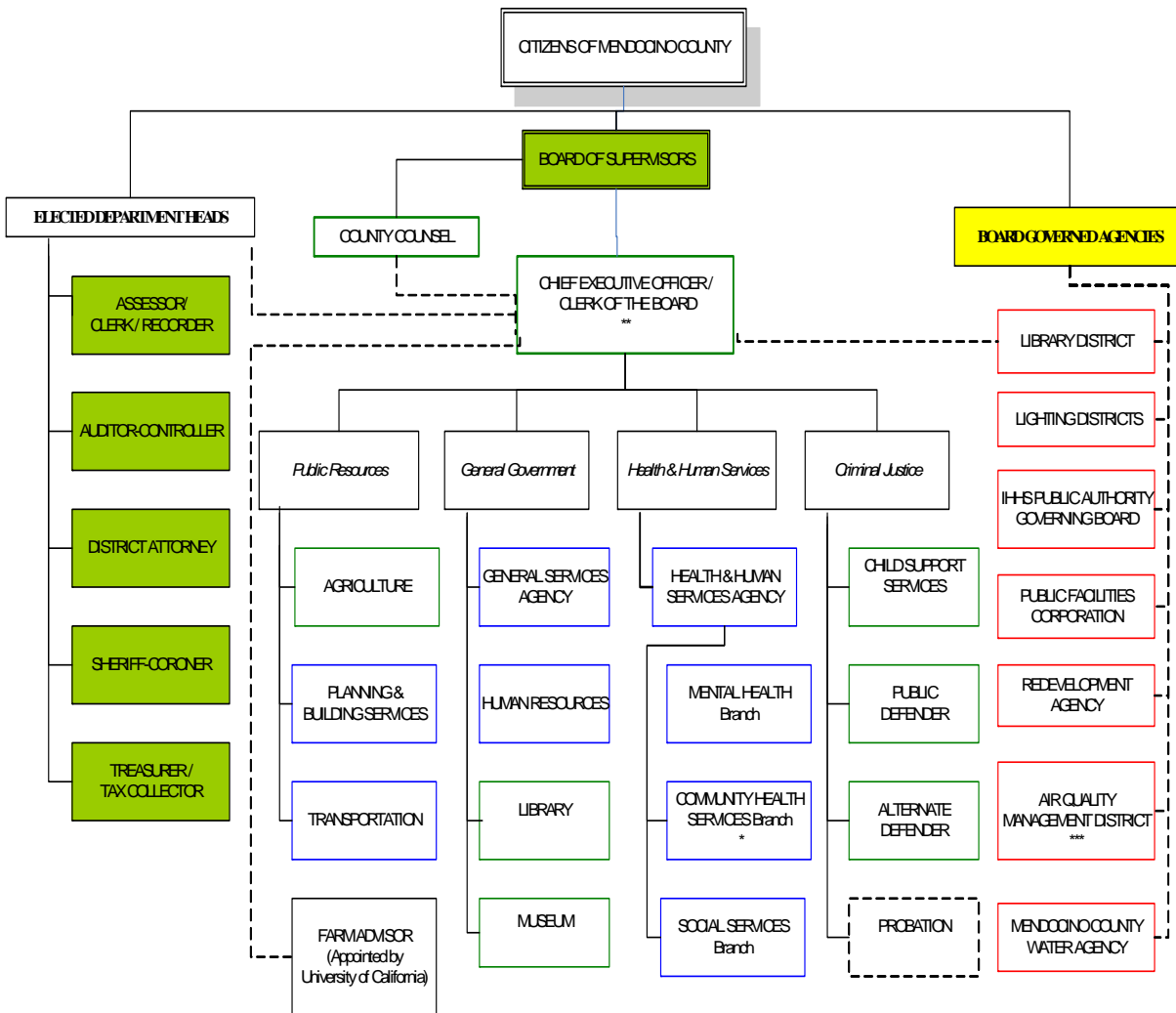


MENDOCINO COUNTY GOVERNMENT ORGANIZATIONS



SPECIALTY DISTRICT

— = Supervision
 - - - = Coordination
 * = Public Health Officer
Appointed by BOS
 ** = Director of Emergency Services
 *** = Air Quality Coordinates w/CEO and Public Resource Agencies

SUPERIOR COURT JUDGES

- Grand Jury
- Court Executive Officer
- Jury Commissioner

The Superior Court was historically a part of County Government, but in 1998 became a State Court.

LEGEND

Indicates Elected Official
 Appointed by Courts
 Through coordination with CEO
 Appointed by Board of Supervisors
 Appointed by Chief Executive Officer

County of Mendocino

2010-11

RECOMMENDED BUDGET

