

FARM ADVISOR

FARM ADVISOR.....6210

JOHN M. HARPER, Farm Advisor

FARM ADVISOR'S BUDGET UNIT

Farm Advisor..... 6210

PROGRAM DISCUSSION

Programs: The University of California Cooperative Extension (UCCE) in Mendocino County is part of a Statewide system that serves as the primary public outreach and off-campus delivery vehicle for the University of California (UC). This system is designed to provide University of California research-based information to landowners, public agencies, private industries, various organizations and the general public. UCCE has been actively involved in serving the people of Mendocino County since 1918. University of California Cooperative Extension's mission is "To serve California through the creation, development and application of knowledge in agriculture, natural and human resources to improve the quality of life for all Californians." In Mendocino County the mission is achieved by providing University of California academics that extend research-based information in plant and animal agriculture, natural resource management, nutrition and consumer sciences, community, youth and human development.

Public Trust: University of California Cooperative Extension serves the residents of Mendocino County by conducting agricultural research and delivering the results directly to the people who farm. Focus is placed on resource management as a means to conserving natural resources. Emphasis is also on care for the health and well-being of individuals by focusing on issues such as food security and nutrition education in addition to providing meaningful learn-by-doing educational activities to children in 4-H clubs and to children participating in school enrichment programs.

Practices: The University of California Cooperative Extension, Farm Advisors' work is aimed at enhancing sustainable agricultural productivity and competitiveness and natural resource conservation, and assists decision-makers in sustainable economic development. With ranchers and other landowners, pest control advisors, and industry representatives, the Farm Advisor identifies current and emerging agricultural opportunities and problems. Collaboration with campus-based specialists and scientists to research, adapt and field-test agricultural and resource improvements or solutions and deliver the results through local workshops and trainings is also done. The University of California 4-H program includes traditional offerings for local youth such as cooking, animal husbandry and

sewing plus new programs to engage today's youth leadership and science and technology based programs including rocketry, GIS, computer science and general science education.

People: Staff includes four University of California academic advisors with cross-county assignments, one University of California's paraprofessional, and three County support staff. Grant-funded research associates are utilized for specific projects. The staff operates with accuracy, efficiency, respect, and candor when dealing with the public and other clientele.

MAJOR ACCOMPLISHMENTS IN F/Y 2009-10

Programs: Worked with the Mendocino Water Agency to assist in developing a Water Wise program to understand irrigated agriculture water demand and irrigation needs for the Navarro River. The recent drought has focused attention on improving cultural practices to conserve water and fish habitat. In addition to researching new varieties and growing practices to enhance local production, the Farm Advisor also partnered with the Mendocino Winegrape and Wine Commission and the Mendocino Promotional Alliance to offer educational programs to improve local wines. Over 550 youth and 200 adults participated in the 4-H program offering activities designed to develop life skills, provide youth with positive and safe after-school activities and prepare youth for leadership roles. The Master Gardener program continued to focus on sustainable food production. A new California Naturalist Program with statewide focus was developed and pilot tested through a grant from the Wildlife Conservation Board. Program materials were also used to collaborate with the Hopland Band of Pomo Indians to develop a model for a Pomo naturalist Program.

For more information about the University of California Cooperative Extension, Farm Advisor programs, visit:

<http://cemendocino.ucdavis.edu/>

Public Trust: Consumers increasingly want to know where their food originates and want assurances that it is grown in a way that is healthy to the user and the planet. For this reason, focus was placed on efforts to learn about environmentally friendly ways to grow wine grapes and make wine including timely topics such as targeted grazing for weed control, biodynamic viticulture and biological control of insects and mites,

FARM ADVISOR

FARM ADVISOR.....6210

JOHN M. HARPER, Farm Advisor

among others. In addition, the Farm Advisor recently completed a study looking at the feasibility of a localized small scale meat harvesting facility. The advantages of this type of facility include humane handling of animals, environmentally-friendly local production and sale of meat products in the growing niche meat market. The Master Gardeners Fertile Grounds Project was created to improve food security by supporting and expanding county school, community and commerce gardens. A series of three workshops were presented on planning, planting and harvesting vegetables in a home garden. The Master Gardeners continue to provide assistance to community gardens in Ukiah and Fort Bragg. On the Coast, the Master Gardeners (a collaborative effort with the Mendocino Coast Botanical Gardens) serve as docents who also help answer questions from the gardening public. Continuing the annual series of Ag Days, co-sponsored with the Mendocino County Farm Bureau, about 1,000 1st-5th Grade elementary students in the north county were introduced to the importance of agriculture through interactive activities at the rodeo grounds in Willits. (Previous Ag Days have been held in Ukiah and Fort Bragg.)

Practices: Working with the Mendocino Winegrape and Wine Commission, a two-day Eco-Winegrowing Conference was held to learn about sustainable, organic and biodynamic issues in winegrowing. In addition, the Viticulture Advisor presented a program on Frost Protection Basics to the California State Water Resources Control Board and continues to work with local growers, the Russian River Flood Control District and the Mendocino County Farm Bureau on Russian River frost water issues. A program on Buying and Selling Local Meats was offered to over 30 local ranchers by the Livestock Advisor talking about the laws and regulations in addition to community supported agriculture or meat-buying clubs. Also, in response to a shortage of sheep shearers in the state, we hosted two sessions of a sheep shearing school to teach potential shearers the skills required to become successful sheep shearers.

People: Staff was downsized by one Staff Assistant position in response to current budget constraints. The current staff continues to cross-train on various departmental functions and computer systems.

GOALS/OBJECTIVES FOR F/Y 2010-11

Programs: Continue to provide educational and applied research programs that ensure conservation and sustained stewardship of Mendocino County's agricultural, natural and human resources through

promotion of scientifically sound management practices. Assist in developing markets for animal and plant agricultural products to expand the County's economic base. Develop and promote the use of integrated and ecologically sound pest management programs in the County.

Public Trust: Expand 4-H into existing after school programs throughout the County, and continue with the second year of the after school mentoring program focusing on science and technology. Continue to develop leadership, citizenship and life skills opportunities for youth throughout the County. Continue to explore alternative markets for meats such as buying clubs. Support the Redwood Forest Foundation in completing their management and conservation plans.

Practices: Additional workshops are planned to discuss the results of the Meat Industry Capacity and Feasibility Study. Research continues on the selection of new grape cultivars that may be well-suited to this area plus research to improve the quality and yield of existing cultivars such as Sauvignon Blanc. Farm Advisor's staff is also developing University of California cost studies on growing winegrapes organically and biodynamically, in addition to one on raising meat goats with the University's Department of Agriculture Economics. These studies are used by growers, bankers, investors and people interested in assessing the cost of agricultural production in this region. The Forestry Advisor has initiated the coordination of a Redwood Forest Science Symposium for 2011. Also, a grant from the Save the Redwood League will focus on small mammal communities across Old Growth stands as part of the League's climate change initiative plus another grant will study continuous cover management of coast redwoods.

People: Provide for succession by cross-training administrative staff. Continue to offer staff development and training opportunities. Graduate 20 new Master Gardeners and hold training for adult 4-H volunteers to improve program delivery.

CURRENT STAFFING

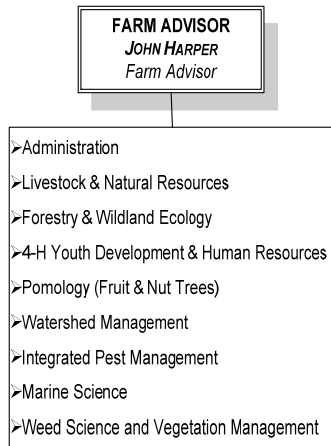
To view staffing levels for this budget unit, see the Position Allocation Table located in this document under the tab *L. Position Allocation Table*.

FARM ADVISOR

FARM ADVISOR6210

JOHN M. HARPER, Farm Advisor

PROGRAM CHART



SUMMARY OF MAJOR BUDGET ACCOUNTS

Salaries & Employee Benefits

- ◇ Acct. 1011 Provides funding for 3 full time positions.

Services & Supplies

- ◇ Acct. 2239 Provides funding for supplies from Friedman Bros., Mendocino Farm Supply, and Ben Meadows and other agriculture suppliers.

CEO RECOMMENDED BUDGET COMMENTS

The CEO recommends funding as submitted by department.

FARM ADVISOR

FARM ADVISOR.....6210

JOHN M. HARPER, Farm Advisor

State Controller
County Budget Act
(1985)

County of Mendocino
State of California
Budget Unit Financing Uses Detail
Recommended Budget for Fiscal Year 2010-11

County Budget Form
Schedule 9

Classification:

Function: 6 Education

Budget Unit: 6210 Farm Advisor

Activity: 602 Education - Agricultural Education

Fund: 1100 County General

Financing Uses Classification	2008-09 Budget	2008-09 Actuals	2009-10 Budget	2009-10 Actuals	2010-11 Request	2010-11 Recommend	2010-11 Adopted
(1)	(2)	(3)	(4)	(5)	(6)	(7)	(8)
<i>as of 5/31/10</i>							
Salaries & Employee Benefits							
861011 Regular Employees	175,350	150,854	150,780	123,880	131,341	131,341	
861012 Extra Help	4,000	0	4,000	0	2,000	2,000	
861013 Overtime Reg Emp	0	92	1,000	0	3,000	3,000	
861021 Co Cont Retirement	23,630	17,983	21,012	13,371	18,958	18,958	
861022 Co Cont OASDI	9,895	8,872	8,833	7,243	7,706	7,706	
861023 Co Cont Medicare	2,314	2,075	2,126	1,694	1,862	1,862	
861024 Co Cont Retire Incr	10,036	7,631	7,710	4,879	6,228	6,228	
861030 Co Cont Health Ins	41,733	22,011	37,847	21,191	30,264	30,264	
861031 Co Cont Unemp Ins	154	154	513	513	997	997	
861035 Co Cont Workers Comp	6,509	6,509	6,740	6,740	7,484	7,484	
Total Salaries & Employee Benefits	273,621	216,182	240,561	179,511	209,840	209,840	0
Services & Supplies							
862060 Communications	6,050	6,030	6,850	4,859	6,766	6,766	
862101 Insurance - General	4,722	4,722	2,133	2,133	2,236	2,236	
862120 Maint - Equip	2,000	535	2,600	280	2,600	2,600	
862150 Memberships	930	919	1,285	571	1,325	1,325	
862170 Office Expense	20,225	19,355	21,525	8,098	22,050	22,050	
862239 Spec Dept Expense	650	12,137	10,900	73	10,900	10,900	
862250 Trans/Travel	17,307	10,684	17,020	6,681	17,020	17,020	
862253 Travel Out of County	1,000	264	1,000	387	1,000	1,000	
Total Services & Supplies	52,884	54,646	63,313	23,082	63,897	63,897	0
Fixed Assets							
864370 Equipment	0	0	0	0	0	0	
Total Fixed Assets	0	0	0	0	0	0	0
Total Net Appropriations	326,505	270,829	303,874	202,593	273,737	273,737	0
Less: Revenues							
825490 State Other	2,000	1,101	1,250	589	1,250	1,250	
827600 Other Sales	0	0	0	1,621	1,250	1,250	
827700 Other	500	2,835	1,250	232	0	0	
Total Revenues	2,500	3,936	2,500	2,442	2,500	2,500	0
Total Net County Cost	324,005	266,892	301,374	200,151	271,237	271,237	0