

FARM ADVISOR

FARM ADVISOR.....6210

JOHN M. HARPER, Farm Advisor

FARM ADVISOR'S BUDGET UNIT

Farm Advisor..... 6210

PROGRAM DISCUSSION

Programs: The University of California Cooperative Extension (UCCE) in Mendocino County is part of a Statewide system that serves as the primary public outreach and off-campus delivery vehicle for the University of California (UC). This system is designed to provide UC research-based information to landowners, public agencies, private industries, various organizations and the general public. UCCE has been actively involved in serving the people of Mendocino County since 1918. UCCE's mission is "To serve California through the creation, development and application of knowledge in agriculture, natural and human resources to improve the quality of life for all Californians." In Mendocino County the mission is achieved by providing University of California academics that extend research-based information in plant and animal agriculture, natural resource management, nutrition and consumer sciences, community, youth and human development.

Public Trust: UCCE serves the residents of Mendocino County by conducting agricultural research and delivering the results directly to the people who farm. Focus is placed on resource management as a means to conserving natural resources. Emphasis is also on care for the health and well-being of individuals by focusing on issues such as food security and nutrition education in addition to providing meaningful learn-by-doing educational activities to children in 4-H clubs and to children participating in school enrichment programs.

Practices: The UCCE Farm Advisors' work is aimed at enhancing sustainable agricultural productivity and competitiveness and natural resource conservation, and assists decision-makers in sustainable economic development. With ranchers and other landowners, pest control advisors, and industry representatives, the Farm Advisor identifies current and emerging agricultural opportunities and problems. Collaboration with campus-based specialists and scientists to research, adapt and field-test agricultural and resource improvements or solutions and deliver the results through local workshops and trainings is also done. The UC 4-H program includes traditional offerings for local youth such as cooking, animal husbandry and sewing plus new programs to engage today's youth including rocketry, GIS, computer science and leadership.

People: Staff includes 4-UC academic advisors and 5-additional advisors with cross-county assignments, a UC

paraprofessional, 2-UC grant-funded staff, and 4-County support staff. The staff operates with accuracy, efficiency, respect, and candor when dealing with the public and other clientele.

MAJOR ACCOMPLISHMENTS IN F/Y 2008-09

Programs: Worked with the Mendocino Water Agency to assist in developing a Water Wise program to understand irrigated agriculture water demand and irrigation needs for the Mendocino County portion of the Russian River. The severe drought has focused attention on improving cultural practices to conserve water and fish habitat. In addition to researching new varieties and growing practices to enhance local production, the Farm Advisor also partnered with the Mendocino Winegrape and Wine Commission and the Mendocino Promotional Alliance to offer educational programs to improve local wines. Over 560 youth and 220 adults participated in the 4-H program offering activities designed to develop life skills, provide youth with positive and safe after-school activities and prepare youth for leadership roles. The Master Gardener program continued to focus on sustainable food production. In cooperation with the Natural Resource Conservation Service, assistance was provided to the landowners recovering from damage following the Mendocino Lightning Complex fires last summer through an educational forum and website information. Winegrowers were provided with information on procedures to mitigate wine smoke taint to maintain wine quality.

For more information about the UCCE Farm Advisor programs, visit:

<http://cemendocino.ucdavis.edu/>

Public Trust: Consumers increasingly want to know where their food originates and want assurances that it is grown in a way that is healthy to the user and the planet. For this reason, focus was placed on efforts to learn about environmentally friendly ways to grow wine grapes and make wine including timely topics such as targeted grazing for weed control, biodynamic viticulture and biological control of insects and mites, among others. In addition, the Farm Advisor has just completed a study looking at the feasibility of a localized small scale meat processing plant. The

FARM ADVISOR

FARM ADVISOR.....6210

JOHN M. HARPER, Farm Advisor

advantages of this type of facility include humane handling of animals, environmentally-friendly local production and sale of meat products in the growing niche meat market. The Master Gardeners Fertile Grounds Project was created to improve food security by supporting and expanding County school, community and commerce gardens. On the Coast, the Master Gardeners (a collaborative effort with the Mendocino Coast Botanical Gardens) serve as docents who also help answer questions from the gardening public. A Livestock Expo brought experts in animal welfare, production, ethics and quality control from around the country for an 8-hour training for over 500 local 4-H and FFA youth. Another 1,000 K-5 elementary students on the Coast were introduced to agriculture at the Coast Ag Day cosponsored with the Farm Bureau.

Practices: Irrigation workshops were held for grape growers through the “Water Wise” program. The sixth year of water quality and flow research to understand the effects of prescribed burning of chaparral vegetation on watersheds was completed. A series of workshops throughout the state introduced the updated Planner’s Guide to Oak Woodland and 100 registered professional foresters attended a Timber Harvest Workshop in Ukiah which provided the current status of listed endangered, threatened and rare animals and plants.

People: Two new Staff Assistants joined the staff and are being cross-trained on various computer systems. An AmeriCorps Vista volunteer with First Five was assigned to the Department as a Hunger Prevention Coordinator to work through February of 2009.

GOALS/OBJECTIVES FOR F/Y 2009-10

Programs: Continue to provide educational and applied research programs that ensure conservation and sustained stewardship of Mendocino County’s agricultural, natural and human resources through promotion of scientifically sound management practices. Assist in developing markets for animal and plant agricultural products to expand the County’s economic base. Develop and promote the use of integrated and ecologically sound pest management programs in the County. Initiate study of water demand for irrigated agriculture in the Navarro Watershed.

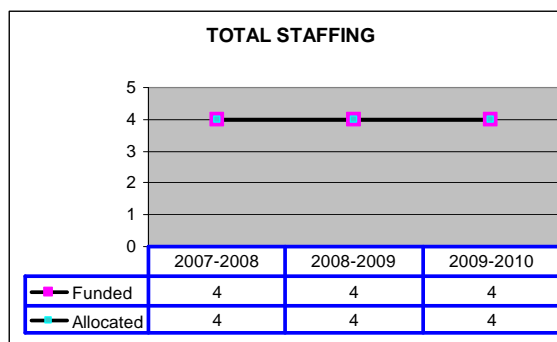
Public Trust: Expand 4-H into existing after school programs throughout the County and initiate a new garden-based after school mentoring program focusing on science and technology. Continue to develop leadership, citizenship and life skills opportunities for youth throughout the County. Continue to explore

alternative markets for meats such as buying clubs. Support the Redwood Forest Foundation in completing their management and conservation plans.

Practices: Workshops are planned on specialty crops and meat buyers clubs. Additional workshops are planned to discuss the results of the Meat Industry Capacity and Feasibility Study. Another study is looking at the post-harvest irrigation of wine grapes to evaluate whether or not it is beneficial to irrigate vineyards after harvest with overhead sprinklers potentially preserving a declining water supply. Farm Advisor’s staff is also developing UC cost studies on growing winegrapes organically and biodynamically in addition to one on raising meat goats with the University’s Department of Agriculture Economics. These studies are used by growers, bankers, investors and people interested in assessing the cost of agricultural production in this region.

People: Provide for succession by cross-training administrative staff. Continue to offer staff development and training opportunities.

STAFFING CHART

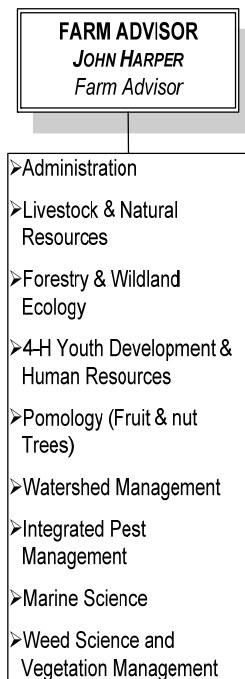


FARM ADVISOR

FARM ADVISOR6210

JOHN M. HARPER, Farm Advisor

PROGRAM CHART



SUMMARY OF MAJOR BUDGET ACCOUNTS

Salaries & Employee Benefits

- ◇ Acct. 1011 Provides funding for 4 full time positions. Increase of \$23,073 from prior year for salaries and benefits. CEO recommendations for funding of 4 positions.

Services & Supplies

- ◇ Acct. 2239 Provides funding for supplies from Friedman Bros., Mendocino Farm Supply, and Ben Meadows and other agriculture suppliers.

CEO RECOMMENDED BUDGET COMMENTS

The CEO recommends funding as submitted by the Department.

FARM ADVISOR

FARM ADVISOR.....6210

JOHN M. HARPER, Farm Advisor

State Controller
County Budget Act
(1985)

County of Mendocino
State of California
Budget Unit Financing Uses Detail
Recommended Budget for Fiscal Year 2009-10

County Budget Form
Schedule 9

Classification:

Function: 6 Education

Budget Unit: 6210 Farm Advisor

Activity: 602 Education - Agricultural Education

Fund: 1100 County General

Financing Uses Classification	2007-08 Budget	2007-08 Actuals	2008-09 Budget	2008-09 Actuals	2009-10 Request	2009-10 Recommend	2009-10 Adopted
(1)	(2)	(3)	(4)	(5)	(6)	(7)	(8)

as of 5/31/09

Salaries & Employee Benefits

861011 Regular Employees	151,457	123,372	175,350	133,291	159,979	159,979	
861012 Extra Help	4,000	14,435	4,000	0	4,000	4,000	
861013 Overtime Reg Emp	1,000	9	0	14	1,000	1,000	
861021 Co Cont Retirement	23,942	17,688	23,630	15,770	21,012	21,012	
861022 Co Cont OASDI	9,700	7,147	9,895	7,842	9,372	9,372	
861023 Co Cont Medicare	2,269	1,890	2,314	1,834	2,252	2,252	
861024 Co Cont Retire Incr	10,042	7,137	10,036	6,698	7,710	7,710	
861030 Co Cont Health Ins	31,667	21,659	41,733	18,951	37,847	37,847	
861031 Co Cont Unemp Ins	175	175	154	154	154	154	
861035 Co Cont Workers Comp	6,296	6,296	6,509	6,509	6,509	6,740	
Total Salaries & Employee Benefits	240,548	199,810	273,621	191,065	249,835	250,425	0

Services & Supplies

862060 Communications	6,066	6,518	6,050	4,748	6,850	6,850	
862101 Insurance - General	4,392	4,392	4,722	4,722	4,722	2,133	
862120 Maint - Equip	2,000	500	2,000	535	2,600	2,600	
862150 Memberships	865	540	930	630	1,285	1,285	
862170 Office Expense	20,066	20,950	20,225	17,236	21,525	21,525	
862239 Spec Dept Expense	650	309	650	10,275	10,900	10,900	
862250 Trans/Travel	20,205	17,235	17,307	7,940	17,020	17,020	
862253 Travel Out of County	960	1,824	1,000	264	1,000	1,000	
Total Services & Supplies	55,204	52,268	52,884	46,351	65,902	63,313	0

Fixed Assets

864370 Equipment	0	0	0	0	0	0	
Total Fixed Assets	0	0	0	0	0	0	0

Total Net Appropriations

	<u>295,752</u>	<u>252,077</u>	<u>326,505</u>	<u>237,415</u>	<u>315,737</u>	<u>313,738</u>	<u>0</u>
--	----------------	----------------	----------------	----------------	----------------	----------------	----------

Less: Revenues

825490 State Other	2,000	826	2,000	1,101	1,250	1,250	
827700 Other	500	2,053	500	2,802	1,250	1,250	
Total Revenues	<u>2,500</u>	<u>2,880</u>	<u>2,500</u>	<u>3,903</u>	<u>2,500</u>	<u>2,500</u>	<u>0</u>

Total Net County Cost

	<u>293,252</u>	<u>249,198</u>	<u>324,005</u>	<u>233,513</u>	<u>313,237</u>	<u>311,238</u>	<u>0</u>
--	----------------	----------------	----------------	----------------	----------------	----------------	----------