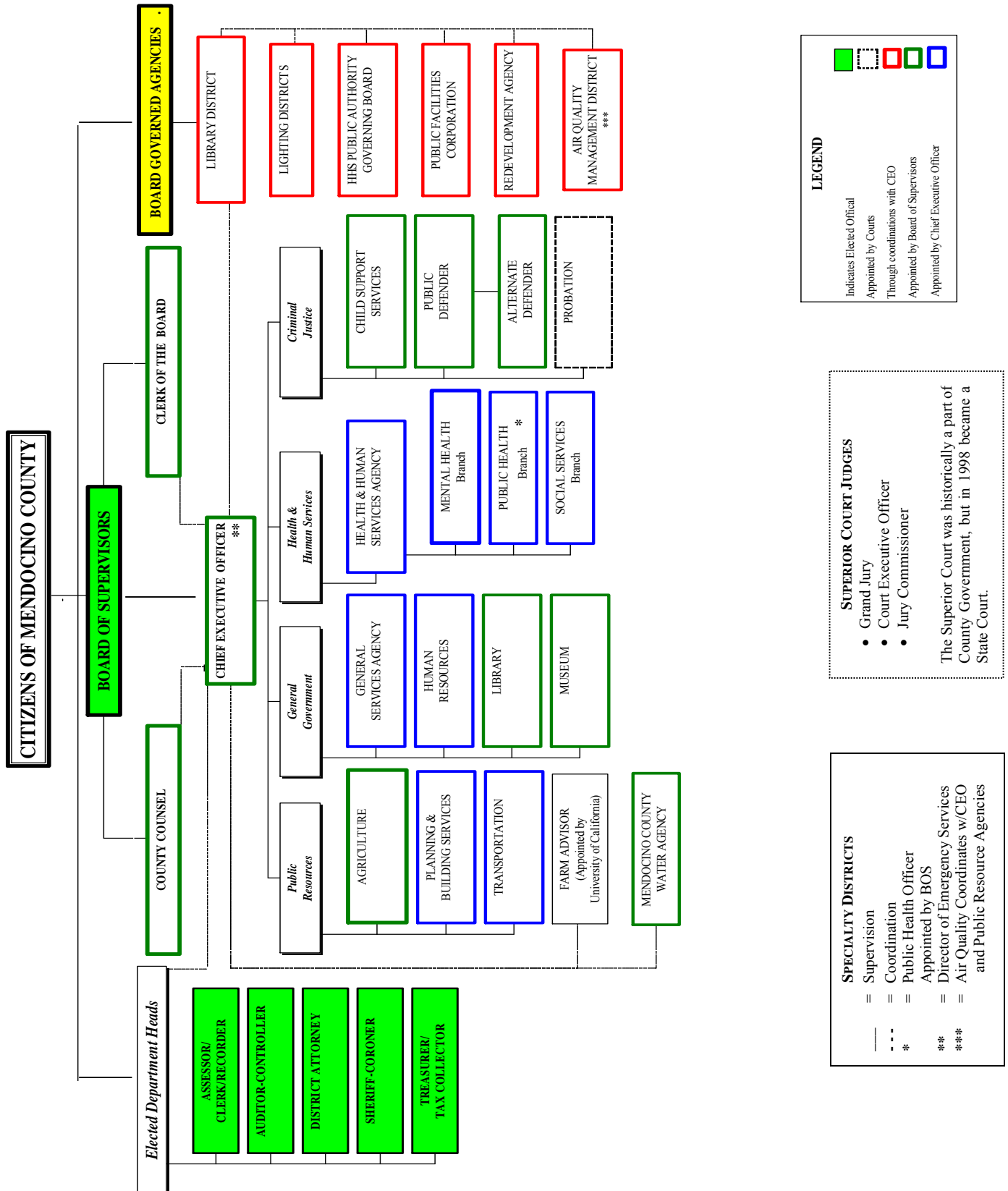


# MENDOCINO COUNTY GOVERNMENT ORGANIZATIONS



**LEGEND**

- Indicates Elected Official
- Appointed by Courts
- Through coordinations with CEO
- Appointed by Board of Supervisors
- Appointed by Chief Executive Officer

**SUPERIOR COURT JUDGES**

- Grand Jury
- Court Executive Officer
- Jury Commissioner

The Superior Court was historically a part of County Government, but in 1998 became a State Court.

**SPECIALTY DISTRICTS**

- = Supervision
- = Coordination
- = Public Health Officer
- = Appointed by BOS
- = Director of Emergency Services
- = Air Quality Coordinates w/CEO and Public Resource Agencies

# County of Mendocino

**2008-09**

*FINAL BUDGET*

---

Page Intentionally Left Blank