



Photo 1. Abandoned car has been vandalized, burned and left in the creek at Crossing 2 where it remained for weeks. Turbid waters typical at crossings.



Photo 2. Another abandoned and vandalized vehicle just upstream of Crossing 2.



Photo 3. One of many off road vehicle areas delivering sediment to Cave Creek.



Photo 4. Severely degraded area adjacent to Cave Creek between Crossings 8 and 9. Ruts created by ORV activity.



Photo 5. Many ORV trails lead directly to the creek bed.



Photo 6. Popular off road area with bare, compacted soils littered with trash and remnants of a fire pit.

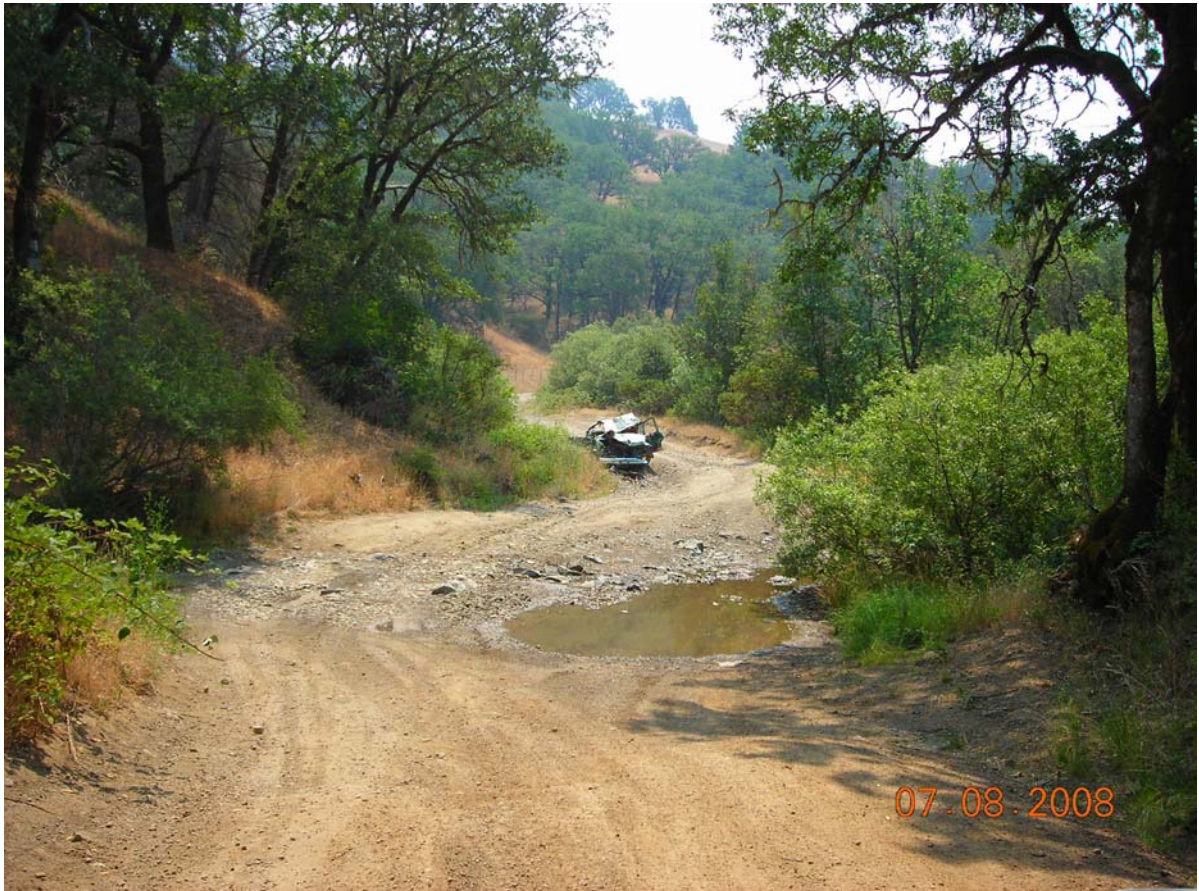


Photo 7. Common scene on Tomki Road (Crossing 2).



Photo 8. Hydrocarbons and other pollutants such as brake dust, oil and gasoline are easily delivered to stream waters from crossing vehicles.



Photo 9. Steep, rocky, angled approach at Crossing 7.



Photo 10. The widest ford, Crossing 9 is viewed from Cave Creek, looking upstream. The channel flows around the willow clump in the center; banks on both sides are actively eroding.