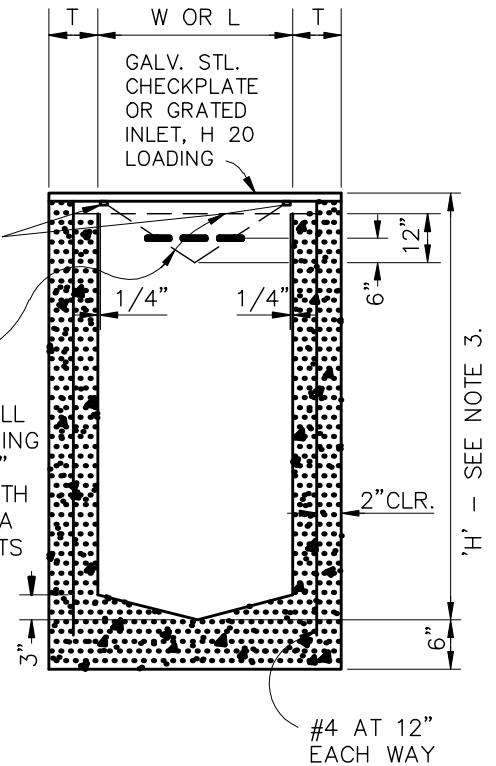


PLAN SECTION

2 1/2" x 1 1/2" x 1/4" L,
WELD TO CHECKPLATE

IF USED AS V-DITCH
DROP INLET, FORM SIDES
TO FIT STD. DITCH. INSTALL
GALV. BAR ACROSS OPENING
AND 2 1/2" x 1 1/2" x 1/4"
AT TOP. INLET FROM EARTH
DITCH MAY BE PER SANTA
ROSA PRE CAST PRODUCTS
TYPICAL SIDE OPENING.



PROFILE SECTION

DEPTH	L	W	T	COVER(S)
3' OR LESS	24"	24"	6"	1 - 36" x 36"
OVER 3' TO 8'	36"	36"	6"	2 - 24" x 48"
OVER 8' TO 12'	SEE NOTE 3		8"	2 - 30" x 48"
OVER 12'	CUSTOM STRUCTURE			

NOTE:

1. SEE MENDOT STD D20 FOR GENERAL NOTES, REINFORCING, AND STEP REQUIREMENTS.
2. DROP INLET MAY BE PRECAST OR CAST IN PLACE, AT CONTRACTOR'S OPTION. PRECAST INLET SHALL BE SANTA ROSA CAST PRODUCTS (SRCP) MODEL 2K, 1M, OR 3M OR APPROVED EQUAL.
3. PROVIDE 40" MANHOLE BASE WHERE 'H' IS GREATER THAN 8' AND LESS THAN OR EQUAL TO 12', USE SRCP REDUCER SLAB 48MH-1M OR APPROVED EQUAL.



DROP INLET AND TURNING STRUCTURE

MENDOT
STD. NO.
D32