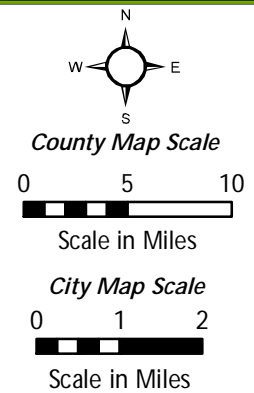
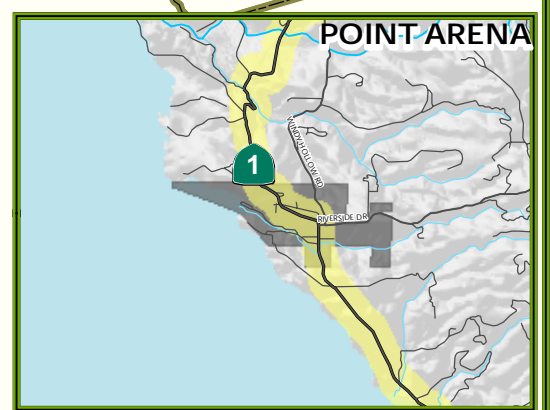
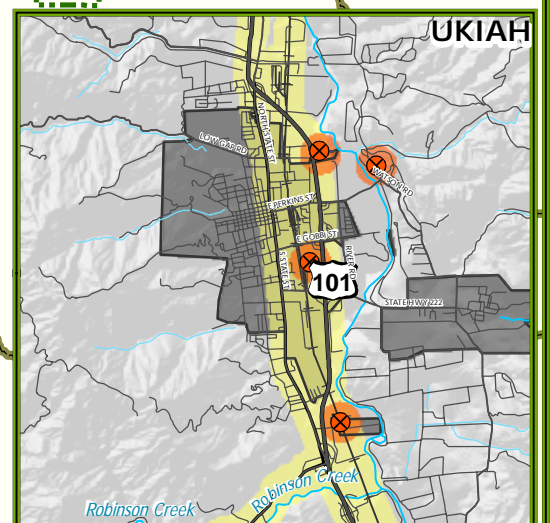
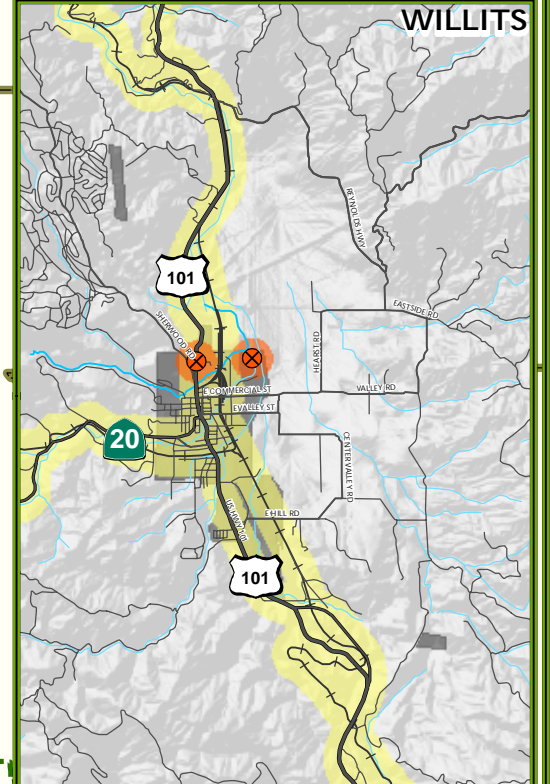
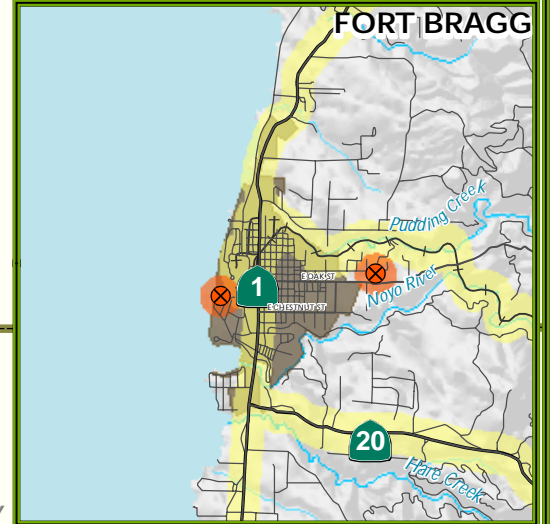
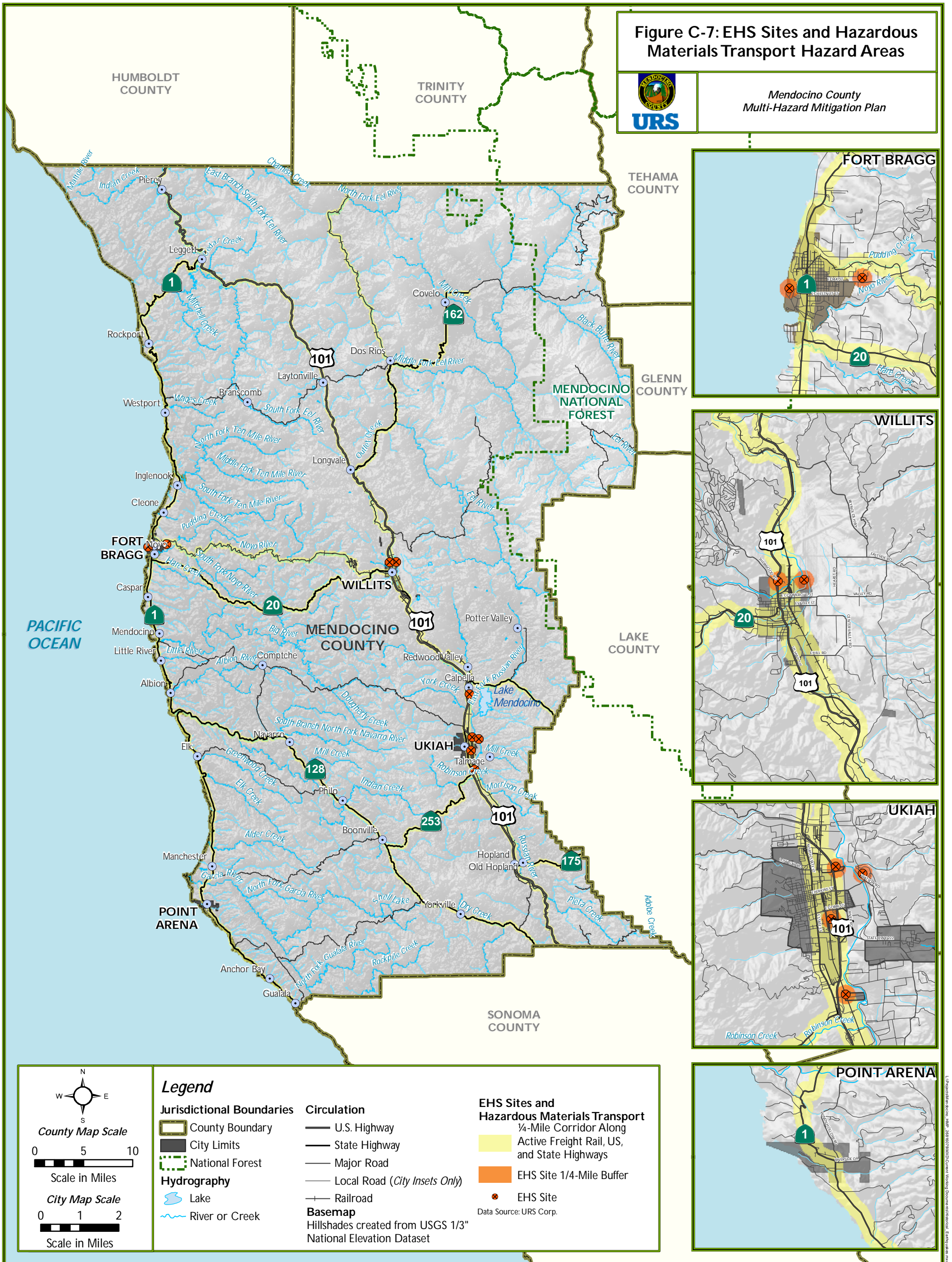


Figure C-7: EHS Sites and Hazardous Materials Transport Hazard Areas



*Mendocino County
Multi-Hazard Mitigation Plan*



Legend	
Jurisdictional Boundaries	Circulation
County Boundary	U.S. Highway
City Limits	State Highway
National Forest	Major Road
Hydrography	Local Road (<i>City Insets Only</i>)
Lake	Railroad
River or Creek	Basemap
	Hillshades created from USGS 1/3" National Elevation Dataset
	EHS Sites and Hazardous Materials Transport
	1/4-Mile Corridor Along Active Freight Rail, US, and State Highways
	EHS Site 1/4-Mile Buffer
	EHS Site
	Data Source: URS Corp.

URS Corporation, 2018. All rights reserved. URS Corporation. Working Document. EHS Sites and Hazardous Materials Transport Hazard Areas.