

Single Family Detached Houses



GARDEN COURT HOUSES/ TYPICAL BLOCK END HOUSES/ STREET VIEW

GARDEN'S GATE SUBDIVISION/ MENDOCINO COUNTY, CALIFORNIA
JON WORDEN ARCHITECTS, INC

Hillside Houses

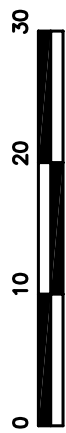
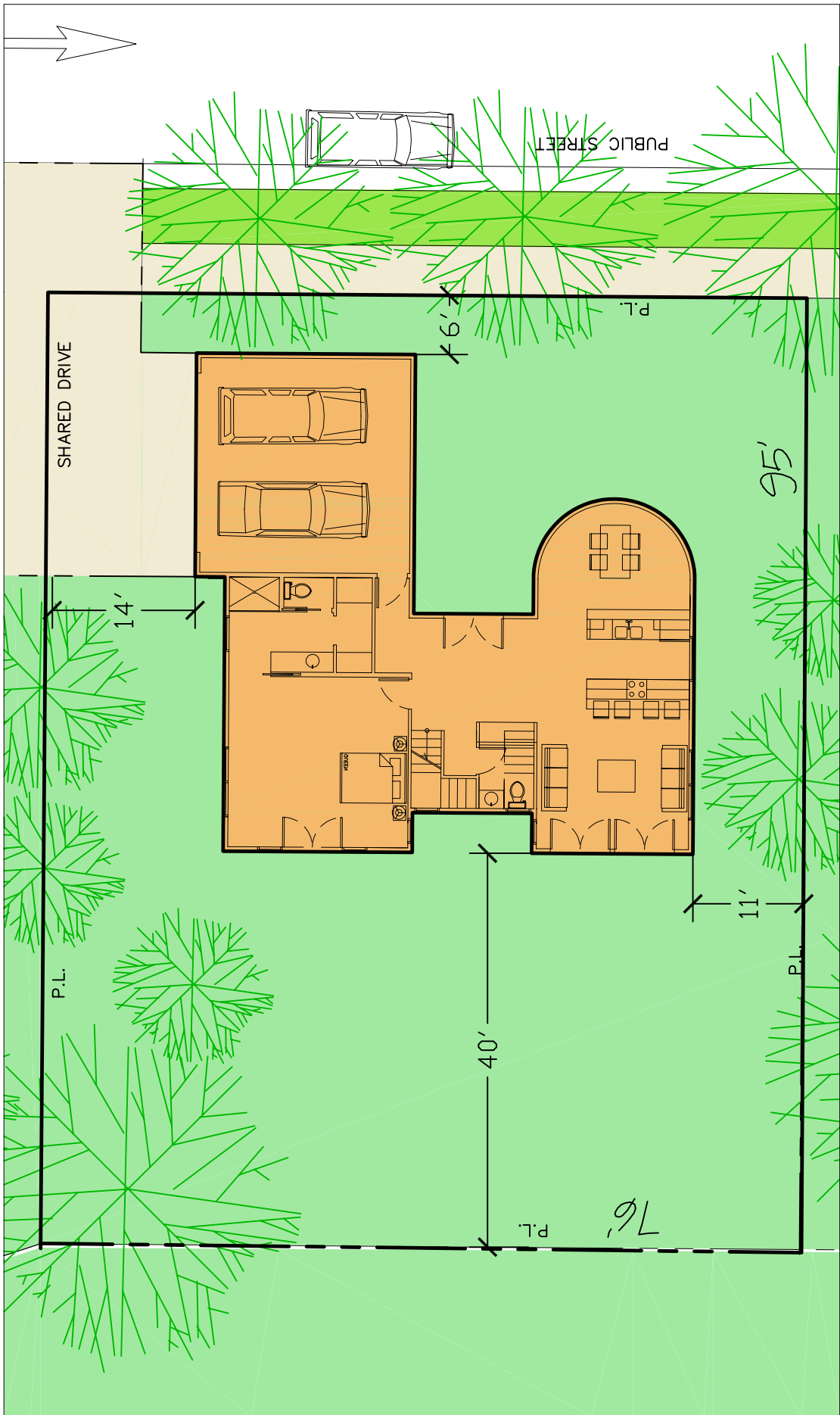


HILLSIDE HOUSES/ STREET VIEW SHOWING HOUSE STEPPING UPHILL
GARDEN'S GATE SUBDIVISION/ MENDOCINO COUNTY, CALIFORNIA
JON WORDEN ARCHITECTS, INC



HILLSIDE HOUSES/ TYPICAL ELEVATIONS

GARDEN'S GATE SUBDIVISION/ MENDOCINO COUNTY, CALIFORNIA
JON WORDEN ARCHITECTS, INC



FIRST FLOOR 1,500 SQ. FT.
 SECOND FLOOR 1,000 SQ. FT.
 TOTAL LIVING AREA 2,500 SQ. FT.
 GARAGE 484 SQ. FT.

H
 SINGLE FAMILY
 HILLSIDE

MEAUX
 ARCHITECTURE
 GROUP

206 Mason Street, Suite D
 Ukiah, CA 95482
 707-462-6377

12/04/2006

GARDEN'S GATE
 UKIAH, CA 95482

Vineyard Houses

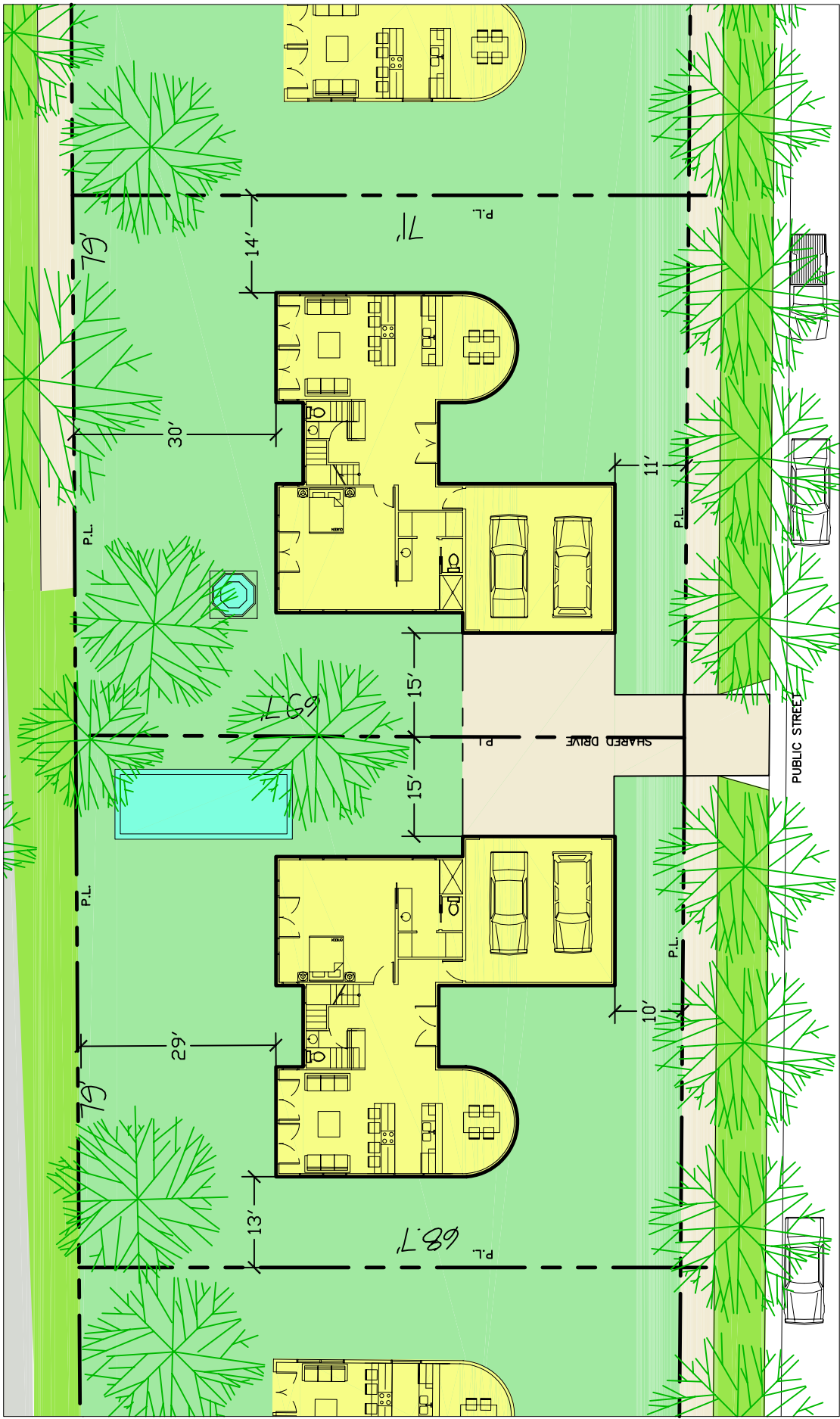


VINEYARD HOUSES/ STREET VIEW SHOWING TYPICAL SIDE ENTRY GARAGES

GARDEN'S GATE SUBDIVISION/ MENDOCINO COUNTY, CALIFORNIA
JON WORDEN ARCHITECTS, INC

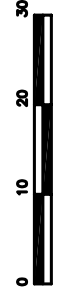


VINEYARD HOUSES/ TYPICAL ELEVATIONS
 GARDEN'S GATE SUBDIVISION/ MENDOCINO COUNTY, CALIFORNIA
 JON WORDEN ARCHITECTS, INC



V
 SINGLE FAMILY
 VINEYARD

FIRST FLOOR 1,500 SQ. FT.
 SECOND FLOOR 1,000 SQ. FT.
 TOTAL LIVING AREA 2,500 SQ. FT.
 GARAGE 484 SQ. FT.



12/04/2006

GARDEN'S GATE

UKIAH, CA 95482



MEUX
 ARCHITECTURE
 GROUP

206 Mason Street, Suite D
 Ukiah, CA 95482
 707-462-6377

Garden Court Houses



GARDEN COURT HOUSES/ TYPICAL STREET VIEW

GARDEN'S GATE SUBDIVISION/ MENDOCINO COUNTY, CALIFORNIA
JON WORDEN ARCHITECTS, INC



GARDEN COURT HOUSES/ TYPICAL ALLEYWAY SHOWING SECOND DWELLING UNITS AT THE CORNER LOTS

GARDEN'S GATE SUBDIVISION/ MENDOCINO COUNTY, CALIFORNIA

JON WORDEN ARCHITECTS, INC



GARDEN COURT HOUSES/ GREEN COURT COTTAGES/ COURT VIEW

GARDEN'S GATE SUBDIVISION/ MENDOCINO COUNTY, CALIFORNIA
JON WORDEN ARCHITECTS, INC.



GARDEN COURT HOUSES/ TYPICAL BACKYARD COURTYARD

GARDEN'S GATE SUBDIVISION/ MENDOCINO COUNTY, CALIFORNIA

JON WORDEN ARCHITECTS, INC



GREEN COURT COTTAGE
3 BEDRMS UP



GREEN COURT COTTAGE
2 BEDRMS UP



GREEN COURT COTTAGE
2 BR + LOFT UP

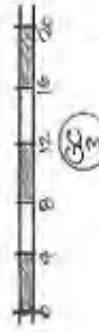
GARDEN COURT HOUSES/ TYPICAL GREEN COURT ELEVATIONS

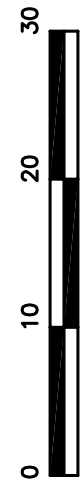
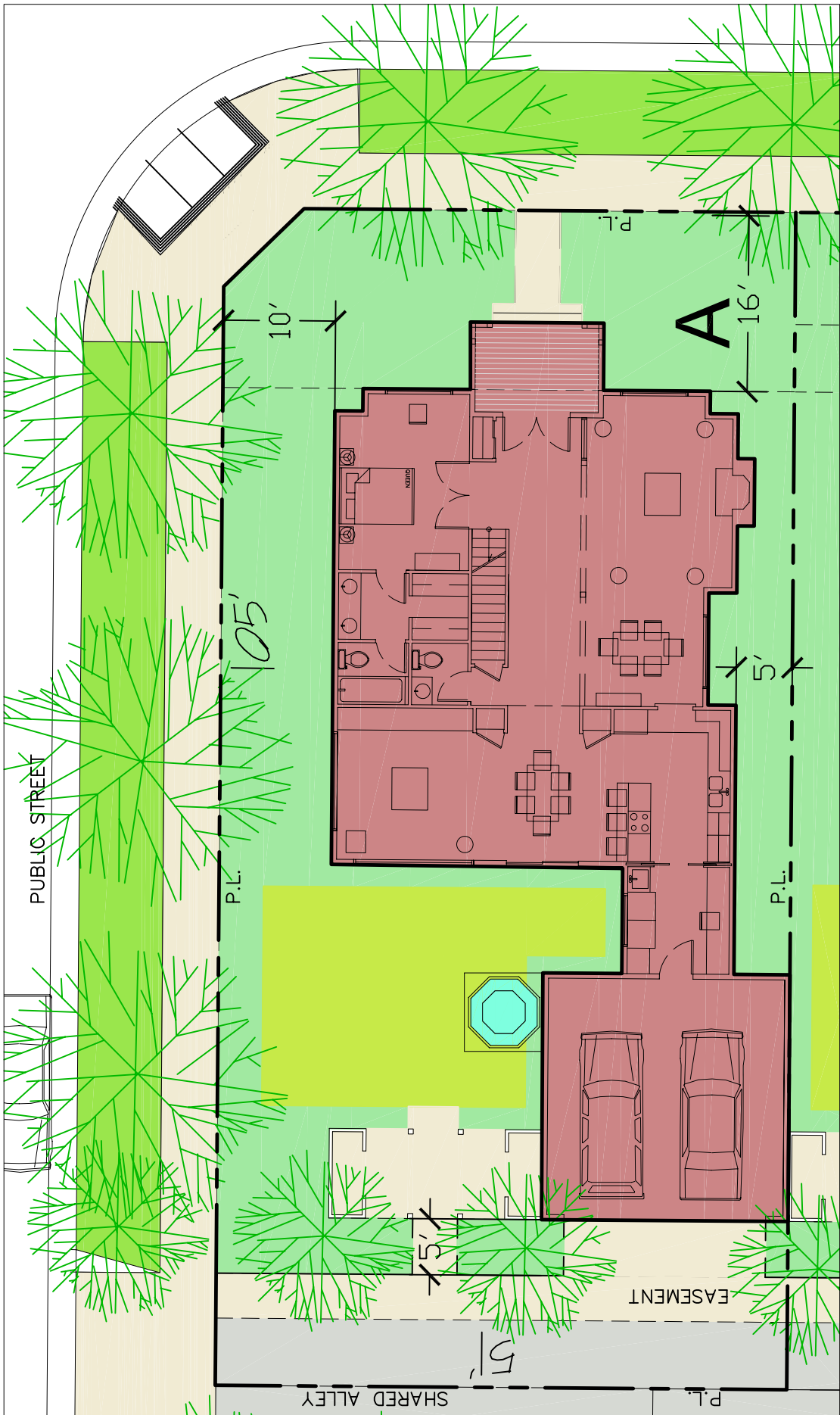
GARDEN'S GATE SUBDIVISION/ MENDOCINO COUNTY, CALIFORNIA
JON WORDEN ARCHITECTS, INC





GARDEN COURT HOUSES/ TYPICAL STREET FRONT HOUSE ELEVATIONS
 GARDEN'S GATE SUBDIVISION/ MENDOCINO COUNTY, CALIFORNIA
 JON WORDEN ARCHITECTS, INC





FIRST FLOOR 1,570 SQ. FT.
SECOND FLOOR 400 SQ. FT.
TOTAL LIVING AREA 1,970 SQ. FT.
GARAGE 484 SQ. FT.

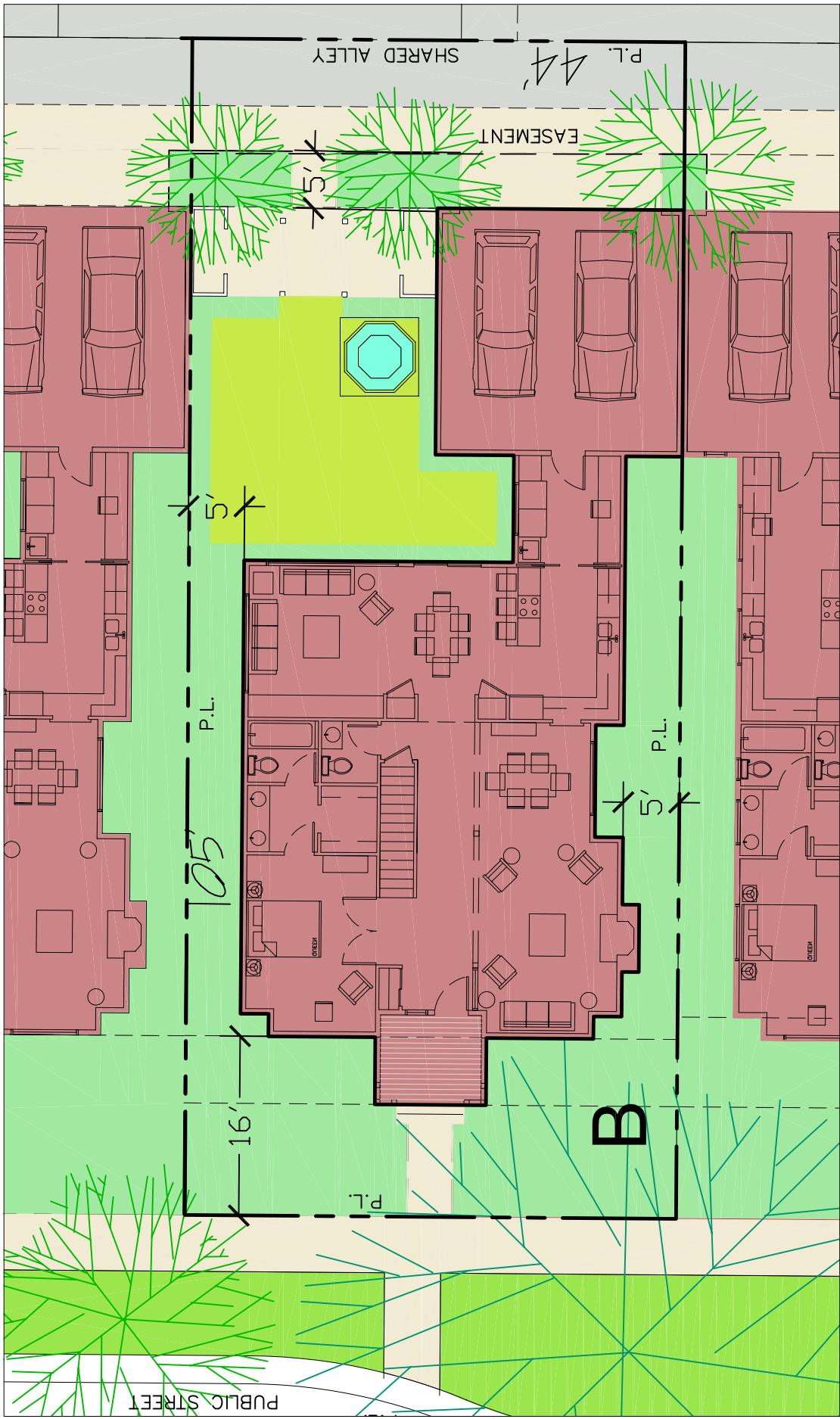
GARDEN COURT
UNIT A

206 Mason Street, Suit D
 Ukiah, CA 95482
 707-462-6377



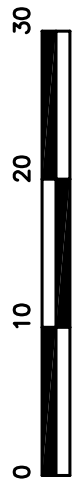
GARDEN'S GATE
 UKIAH, CA 95482

12/04/2006



GARDEN COURT
UNIT **B**

FIRST FLOOR 1,490 SQ. FT.
SECOND FLOOR 400 SQ. FT.
TOTAL LIVING AREA 1,890 SQ. FT.
GARAGE 484 SQ. FT.



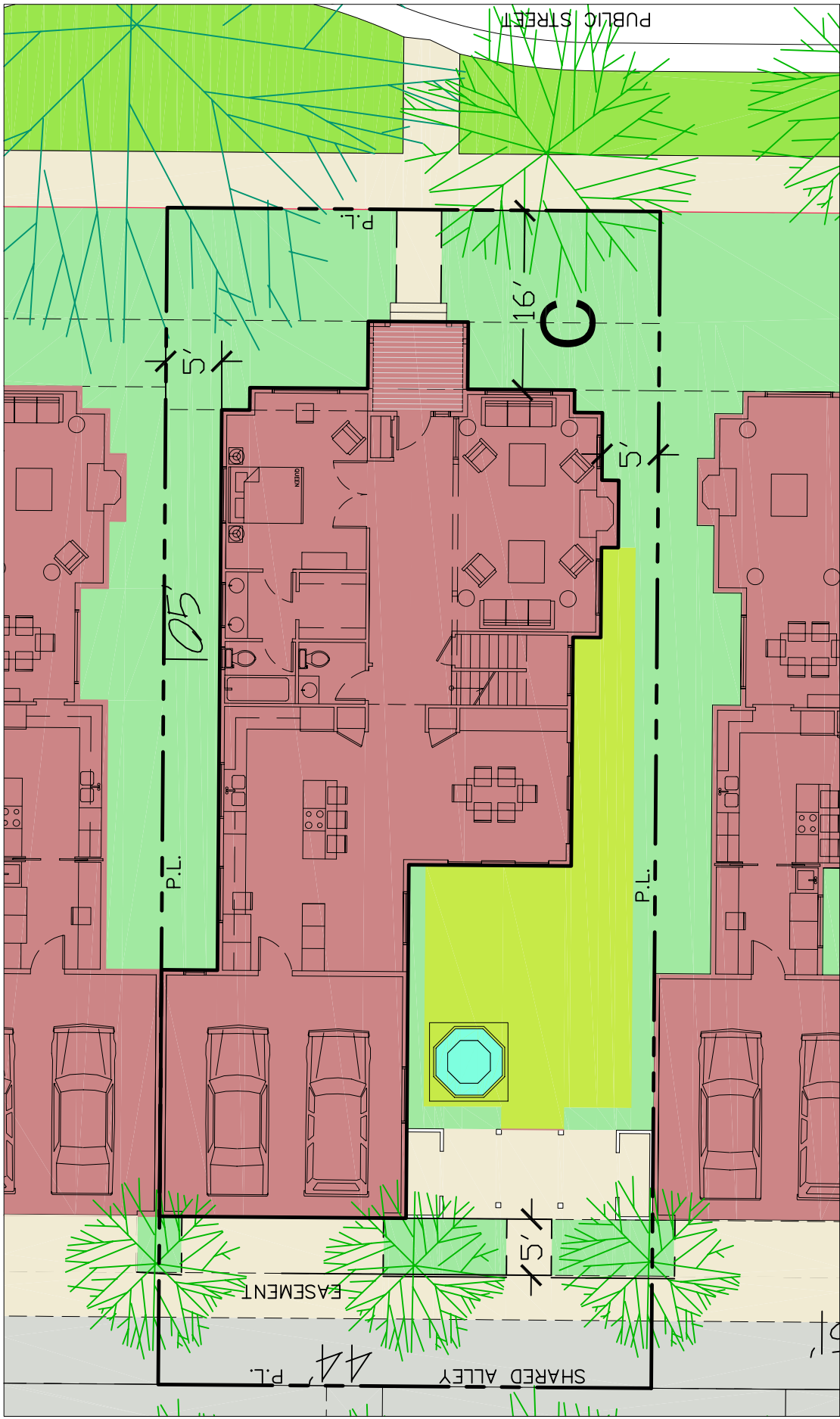
12/04/2006

GARDEN'S GATE

UKIAH, CA 95482

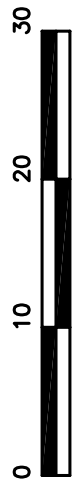


206 Mason Street, Suite D
Ukiah, CA 95482
707-462-6377



GARDEN COURT
UNIT
C

FIRST FLOOR 1,528 SQ. FT.
SECOND FLOOR 400 SQ. FT.
TOTAL LIVING AREA 1,928 SQ. FT.
GARAGE 484 SQ. FT.



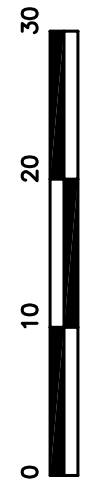
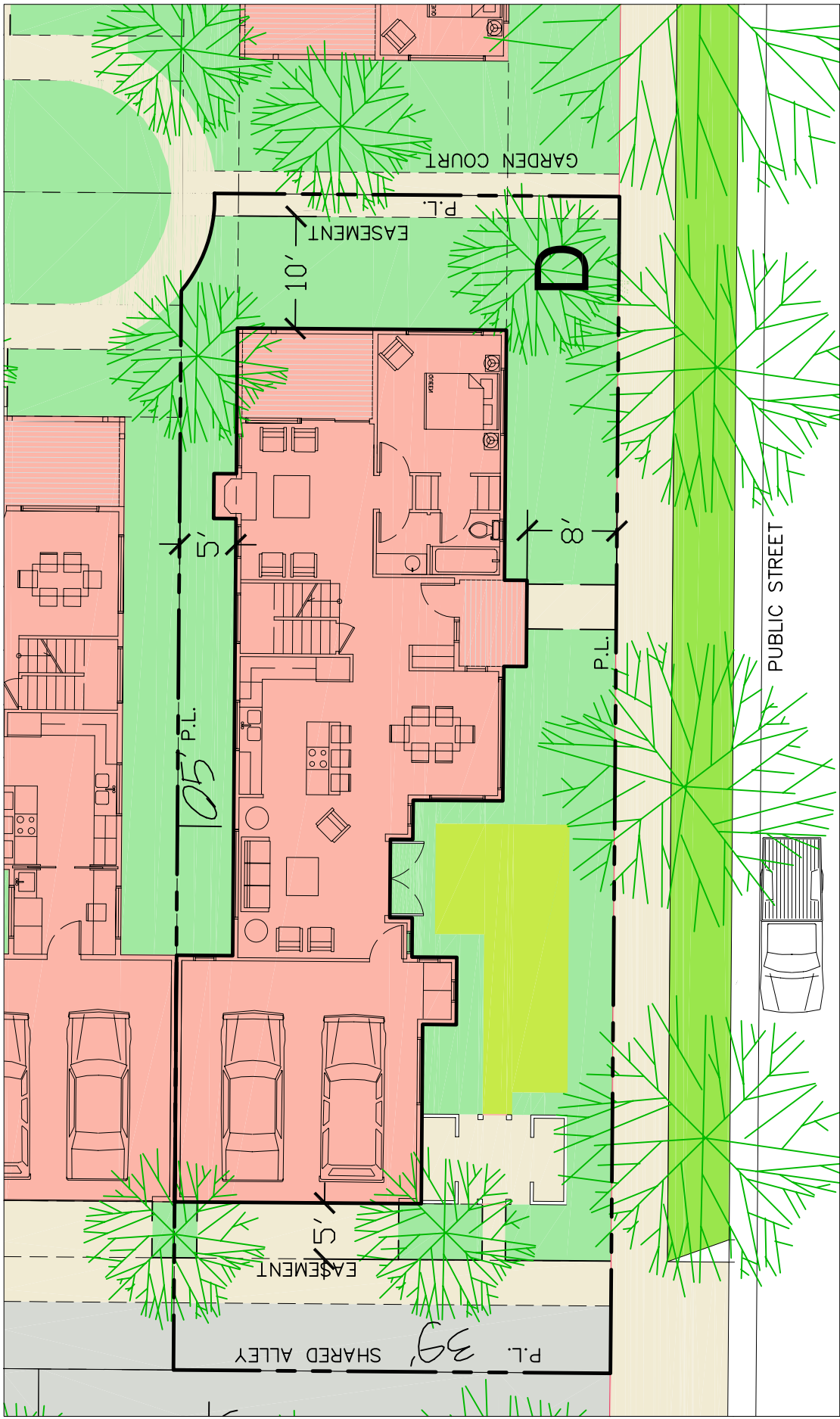
12/04/2006

GARDEN'S GATE

UKIAH, CA 95482



206 Mason Street, Suite D
Ukiah, CA 95482
707-462-6377



FIRST FLOOR 1,115 SQ. FT.
 SECOND FLOOR 400 SQ. FT.
 TOTAL LIVING AREA 1,515 SQ. FT.
 GARAGE 484 SQ. FT.

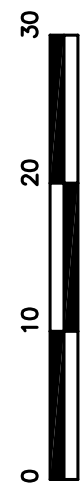
GARDEN COURT
 UNIT **D**

206 Mason Street, Suit D
 Ukiah, CA 95482
 707-462-6377



GARDEN'S GATE
 UKIAH, CA 95482

12/04/2006



FIRST FLOOR 1,015 SQ. FT.
 SECOND FLOOR 400 SQ. FT.
 TOTAL LIVING AREA 1,415 SQ. FT.
 GARAGE 484 SQ. FT.

GARDEN COURT
 UNIT **E**

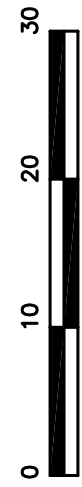
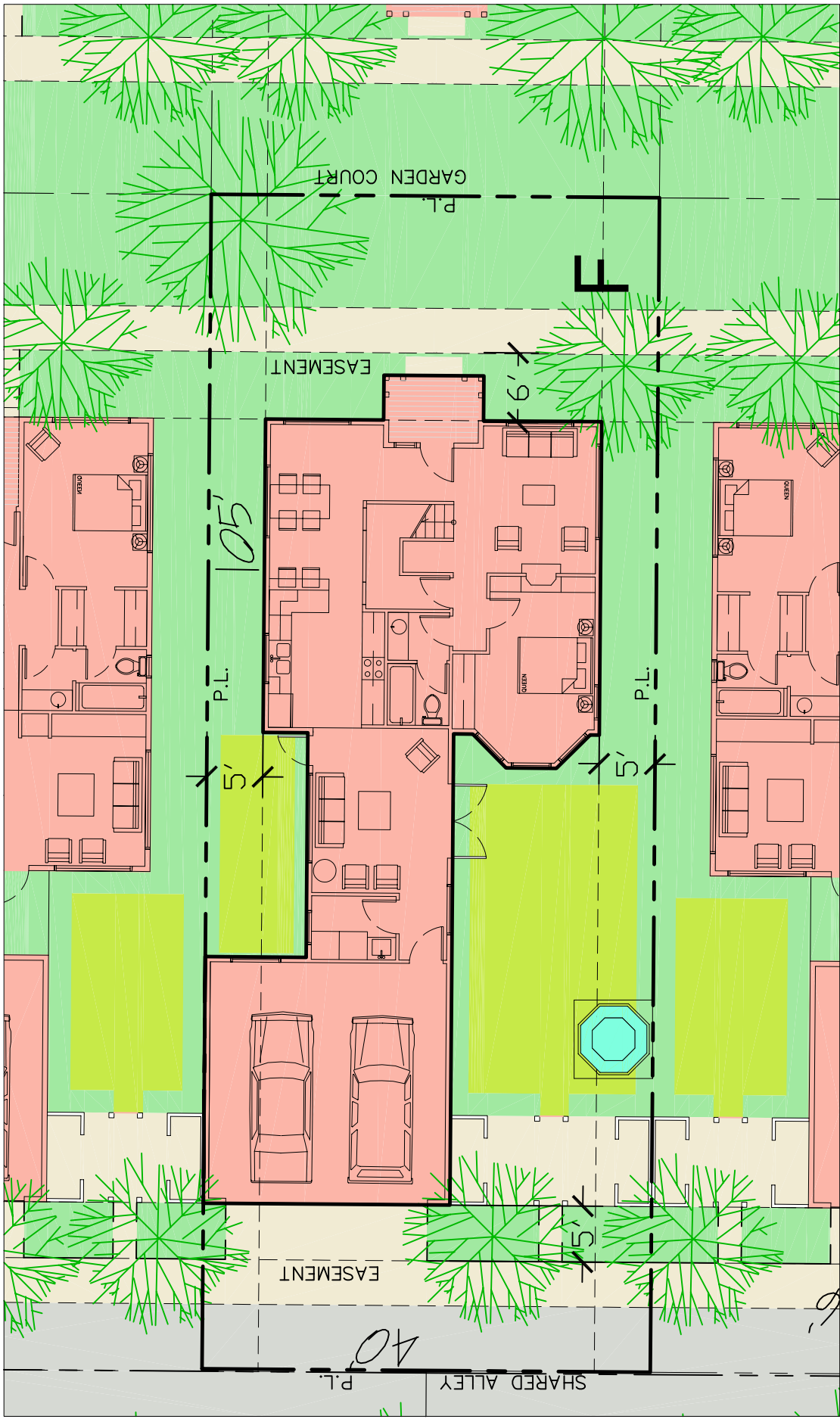
206 Mason Street, Suite D
 Ukiah, CA 95482
 707-462-6377



GARDEN'S GATE

UKIAH, CA 95482

12/04/2006



FIRST FLOOR 1,100 SQ. FT.
 SECOND FLOOR 400 SQ. FT.
 TOTAL LIVING AREA 1,500 SQ. FT.
 GARAGE 484 SQ. FT.

F
 GARDEN COURT
 UNIT

206 Mason Street, Suite D
 Ukiah, CA 95482
 707-462-6377



GARDEN'S GATE
 UKIAH, CA 95482

12/04/2006



COTTAGE LOT HOUSE

R

LIVING AREA 1,066 SQ. FT.
GARAGE 484 SQ. FT.



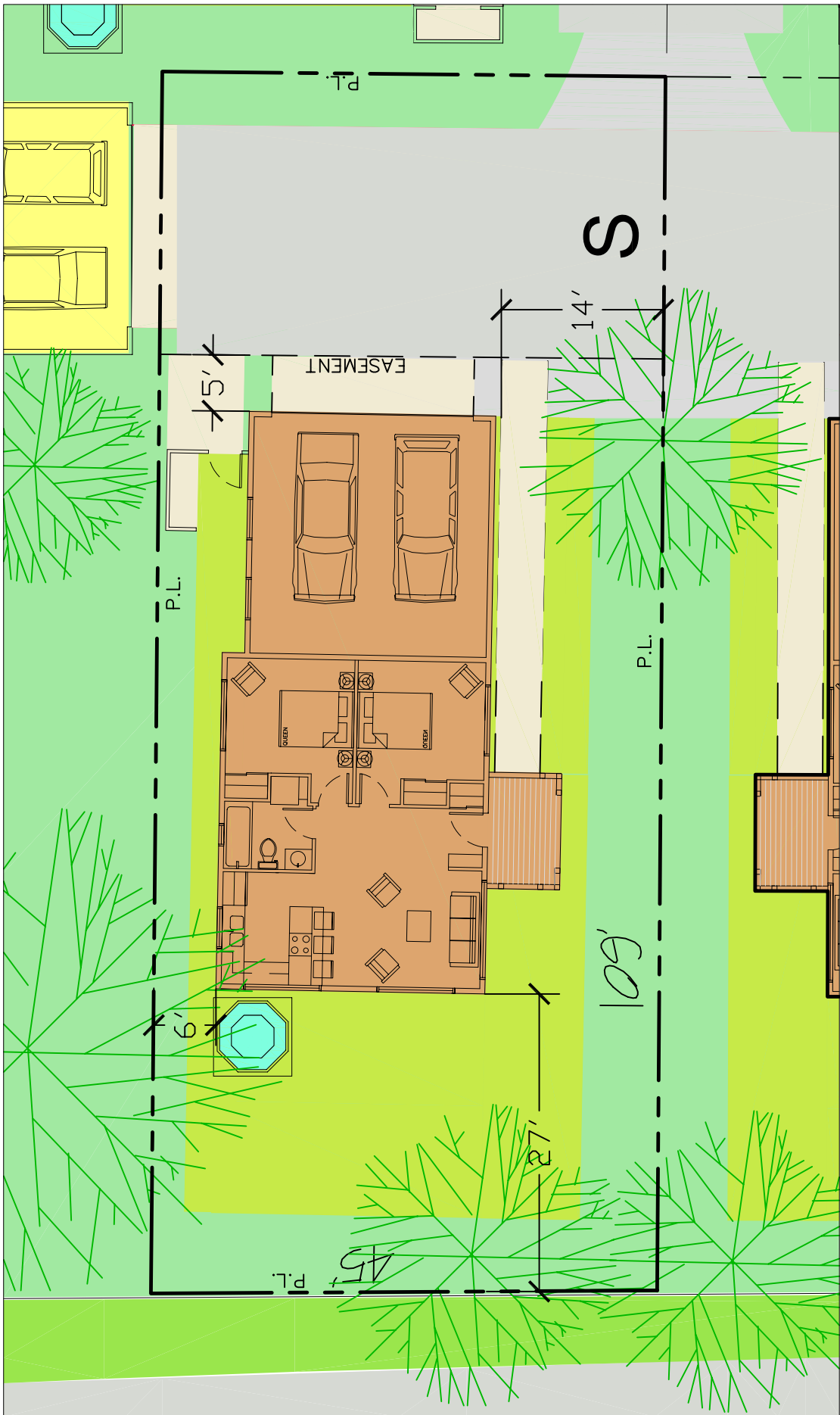
12/04/2006

GARDEN'S GATE

UKIAH, CA 95482



206 Mason Street, Suite D
Ukiah, CA 95482
707-462-6377



COTTAGE LOT
HOUSE

LIVING AREA 720 SQ. FT.
GARAGE 484 SQ. FT.



12/04/2006

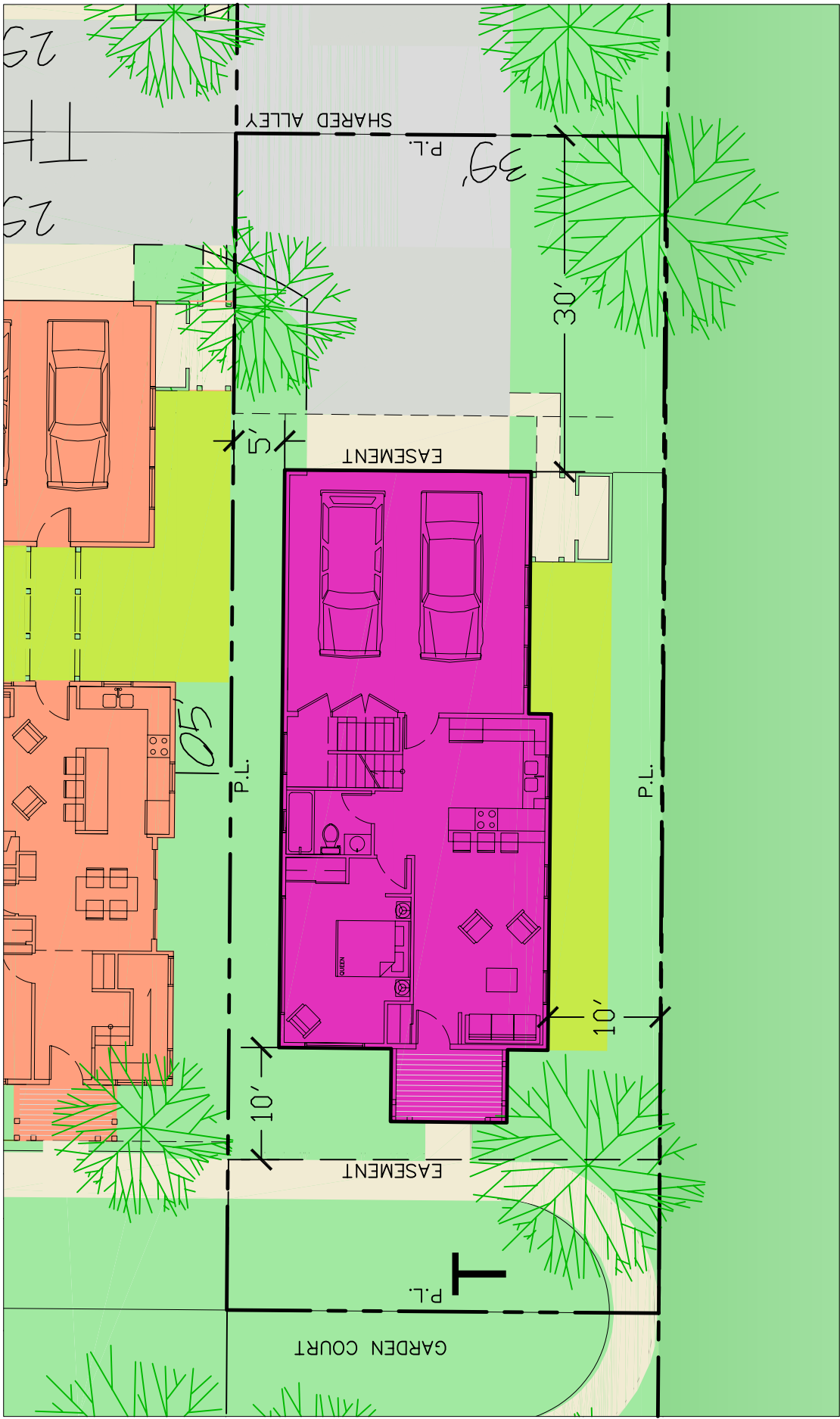
GARDEN'S GATE

UKIAH, CA 95482

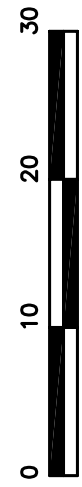


MEUX
ARCHITECTURE
GROUP

206 Mason Street, Suite D
Ukiah, CA 95482
707-462-6377




COTTAGE LOT HOUSE
 FIRST FLOOR 720 SQ. FT.
 SECOND FLOOR 650 SQ. FT.
 TOTAL LIVING AREA 1,370 SQ. FT.
 GARAGE 484 SQ. FT.



GARDEN'S GATE
 UKIAH, CA 95482

12/04/2006



MEaux
 ARCHITECTURE
 GROUP

206 Mason Street, Suite D
 Ukiah, CA 95482
 707-462-6377

Townhouse Lots



TOWNHOUSE LOTS/ FOUR-PLEX HOUSES/ STREET VIEW

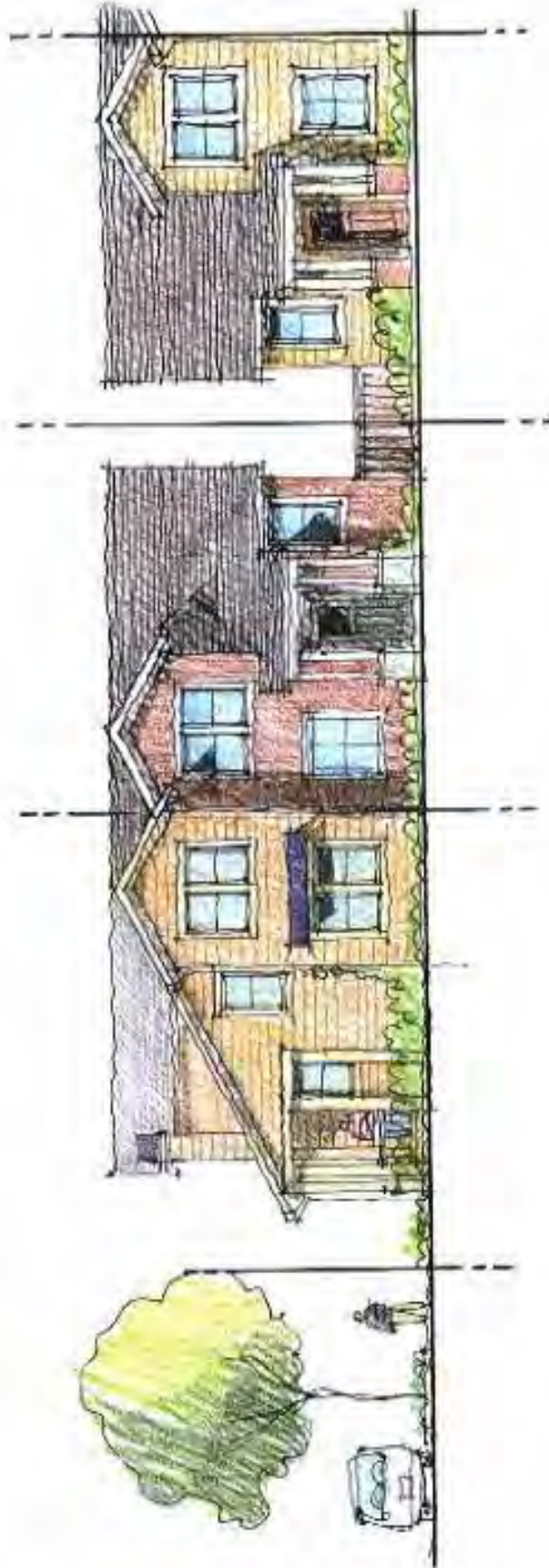
GARDEN'S GATE SUBDIVISION/ MENDOCINO COUNTY, CALIFORNIA
JON WORDEN ARCHITECTS, INC

2 Unit Townhouse



TOWNHOUSE LOTS/ DUPLEX ROWHOUSES/ STREET VIEW

GARDEN'S GATE SUBDIVISION/ MENDOCINO COUNTY, CALIFORNIA
JON WORDEN ARCHITECTS, INC.



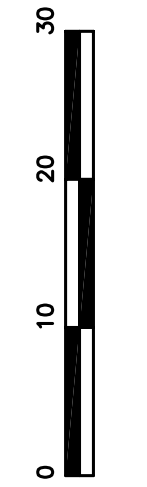
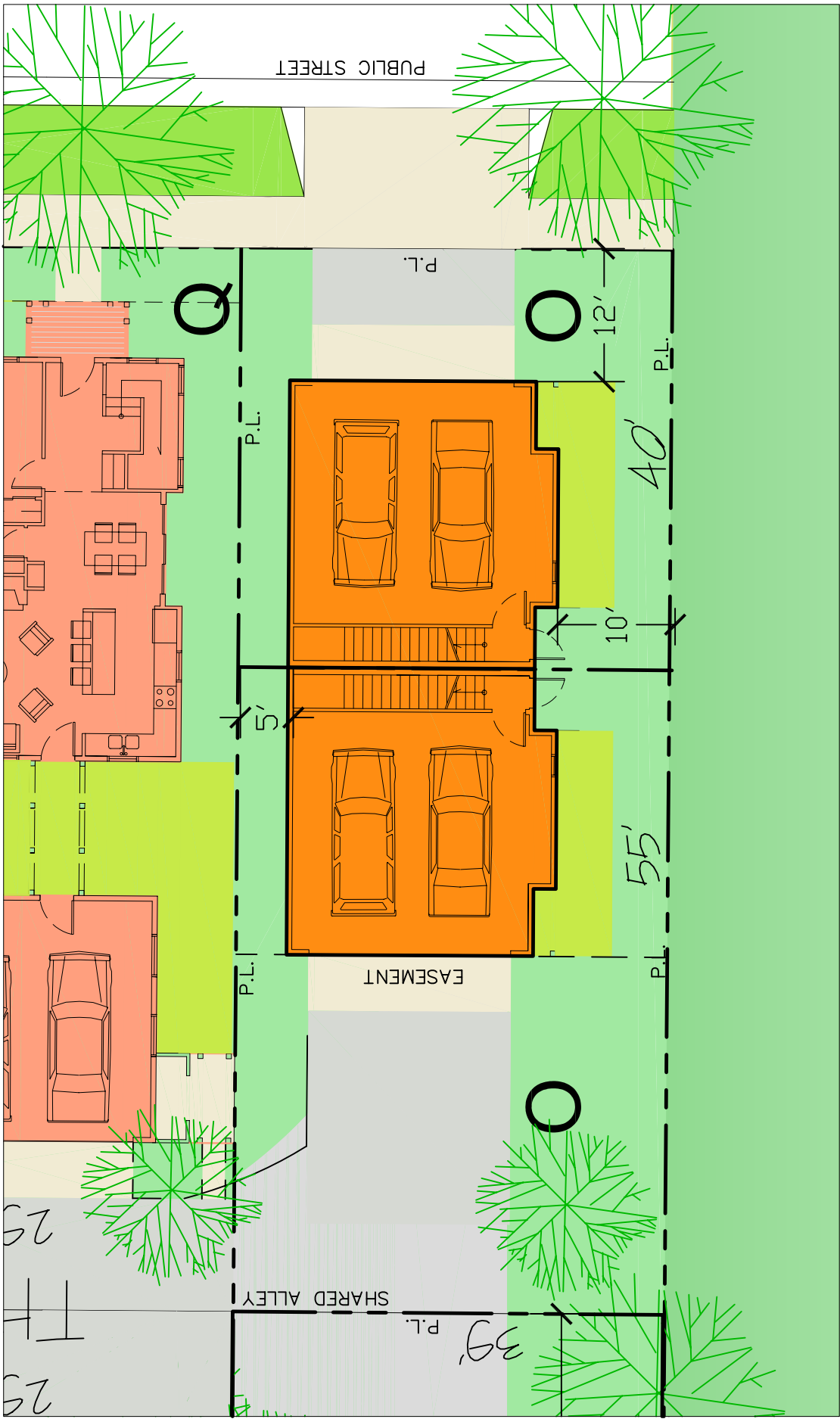
TOWNHOUSES/ ALLEY LOADED/ TWO STORY DUPLEX/ TYPICAL STREET ELEVATIONS
GARDEN'S GATE SUBDIVISION/ MENDOCINO COUNTY, CALIFORNIA
JON WORDEN ARCHITECTS, INC



TOWNHOUSES/ PARKING COURT/ THREE STORY DUPLEX/ TYPICAL ELEVATIONS
 GARDEN'S GATE SUBDIVISION/ MENDOCINO COUNTY, CALIFORNIA
 JON WORDEN ARCHITECTS, INC



TOWNHOUSES/ PARKING COURT/ TWO STORY DUPLEX/ TYPICAL ELEVATIONS
 GARDEN'S GATE SUBDIVISION/ MENDOCINO COUNTY, CALIFORNIA
 JON WORDEN ARCHITECTS, INC.



FIRST FLOOR 88 SQ. FT.
 SECOND FLOOR 570 SQ. FT.
 THIRD FLOOR 288 SQ. FT.
 TOTAL LIVING AREA 946 SQ. FT.
 GARAGE 484 SQ. FT.



TOWNHOUSE
 DUPLEX

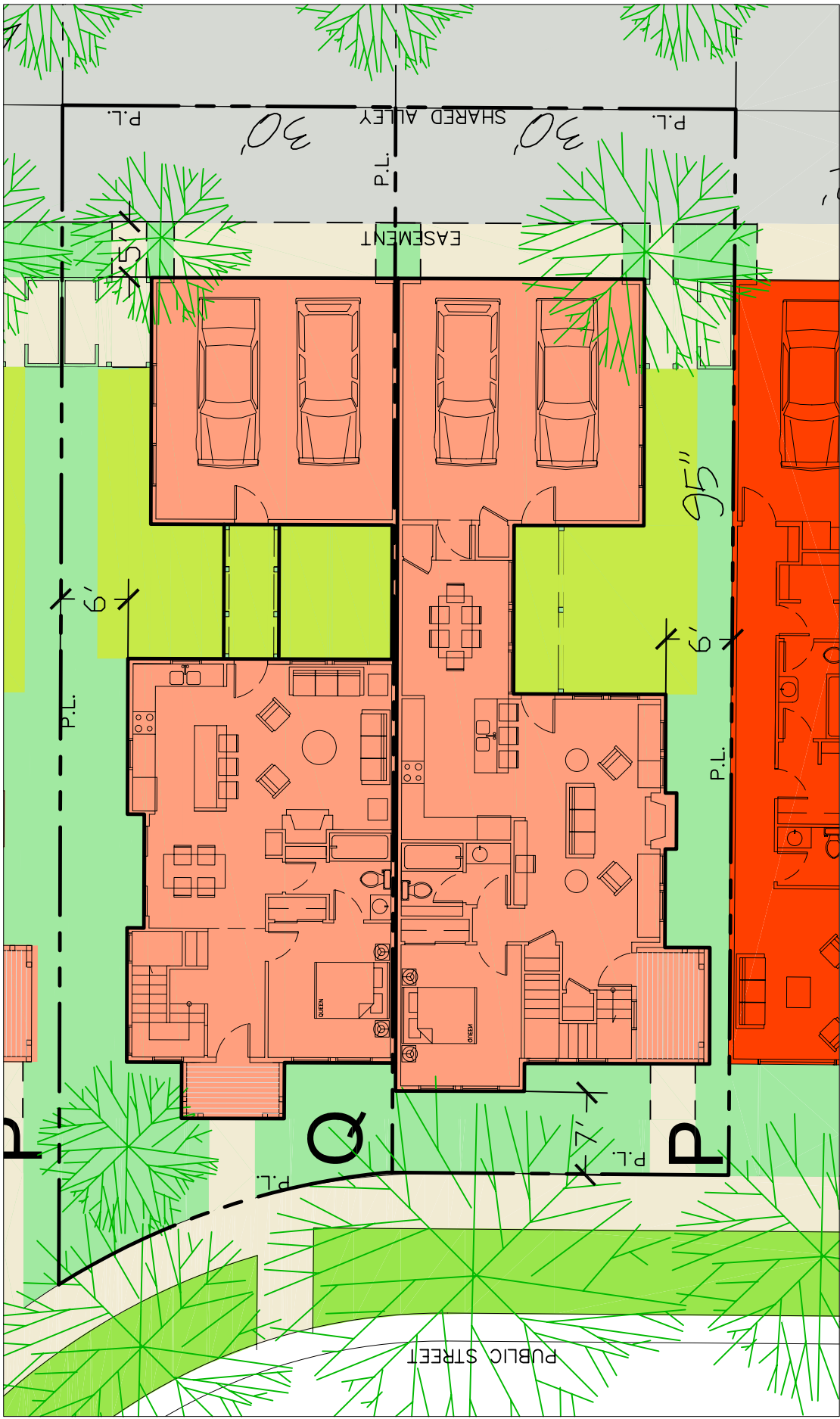
206 Mason Street, Suite D
 Ukiah, CA 95482
 707-462-6377



GARDEN'S GATE

UKIAH, CA 95482

12/04/2006



TOWNHOUSE P FIRST FLOOR 905 SQ. FT.
 SECOND FLOOR 400 SQ. FT.
 TOTAL LIVING AREA 1,305 SQ. FT.
 GARAGE 484 SQ. FT.

Q FIRST FLOOR 847 SQ. FT.
 SECOND FLOOR 400 SQ. FT.
 TOTAL LIVING AREA 1,247 SQ. FT.
 GARAGE 484 SQ. FT.

12/04/2006

GARDEN'S GATE

UKIAH, CA 95482



MEaux ARCHITECTURE GROUP

206 Mason Street, Suite D
 Ukiah, CA 95482
 707-462-6377

4-Unit Townhouse



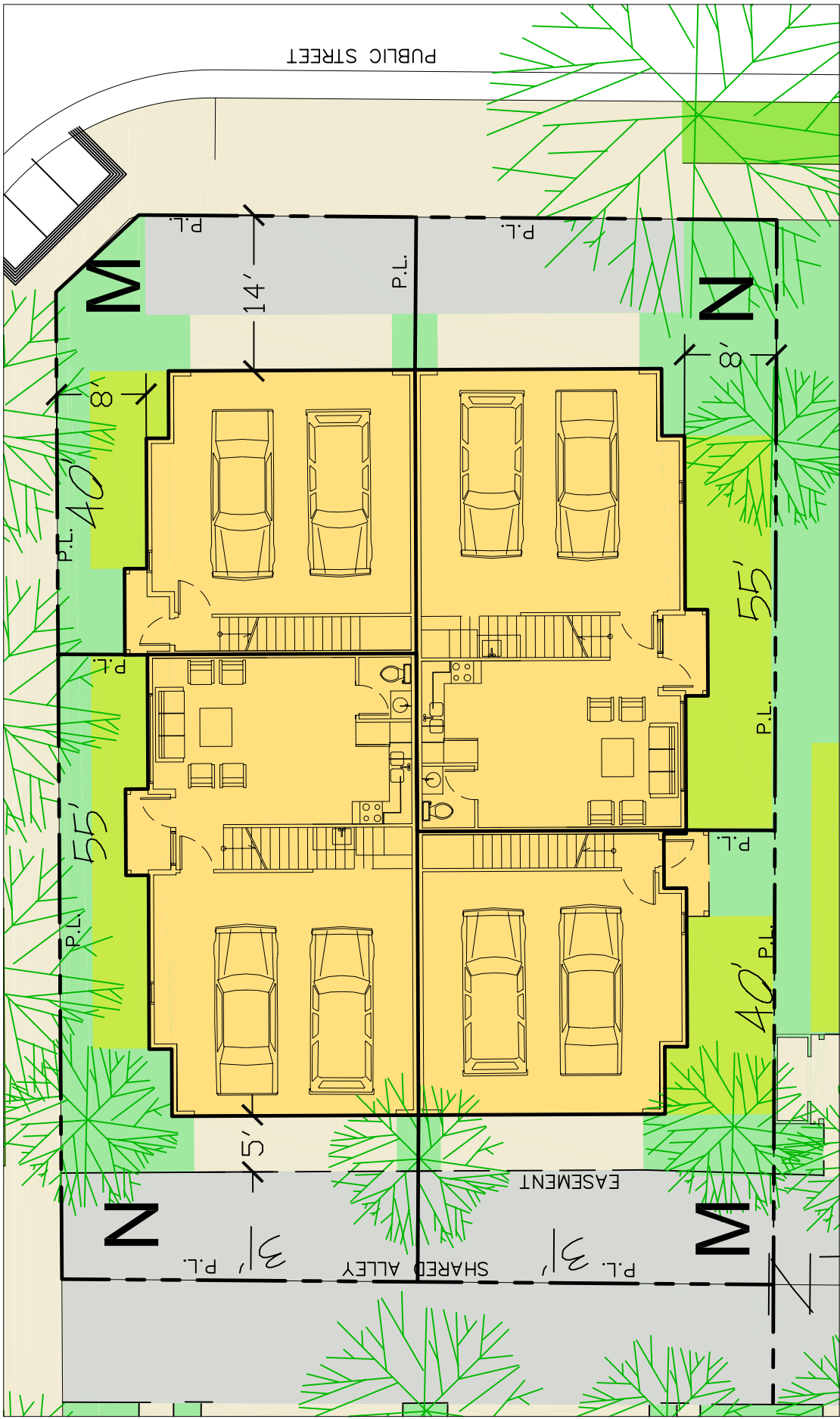
TOWNHOUSES/ FOUR-PLEX HOUSES/ PARKING LANE VIEW AT CORNER OF STREET

GARDEN'S GATE SUBDIVISION/ MENDOCINO COUNTY, CALIFORNIA

JON WORDEN ARCHITECTS, INC



TOWNHOUSES/ PARKING COURT/ TWO & THREE STORY FOURPLEX/ TYPICAL ELEVATIONS
 GARDEN'S GATE SUBDIVISION/ MENDOCINO COUNTY, CALIFORNIA
 JON WORDEN ARCHITECTS, INC




TOWNHOUSE	M	FIRST FLOOR	81 SQ. FT.	FIRST FLOOR	444 SQ. FT.	0	30
FOURPLEX	N	SECOND FLOOR	500 SQ. FT.	SECOND FLOOR	500 SQ. FT.	0	20
		THIRD FLOOR	500 SQ. FT.	TOTAL LIVING AREA	944 SQ. FT.		10
				GARAGE	484 SQ. FT.		0

GARDEN'S GATE

UKIAH, CA 95482

12/04/2006


MEUX ARCHITECTURE GROUP
 206 Mason Street, Suit D
 Ukiah, CA 95482
 707-462-6377