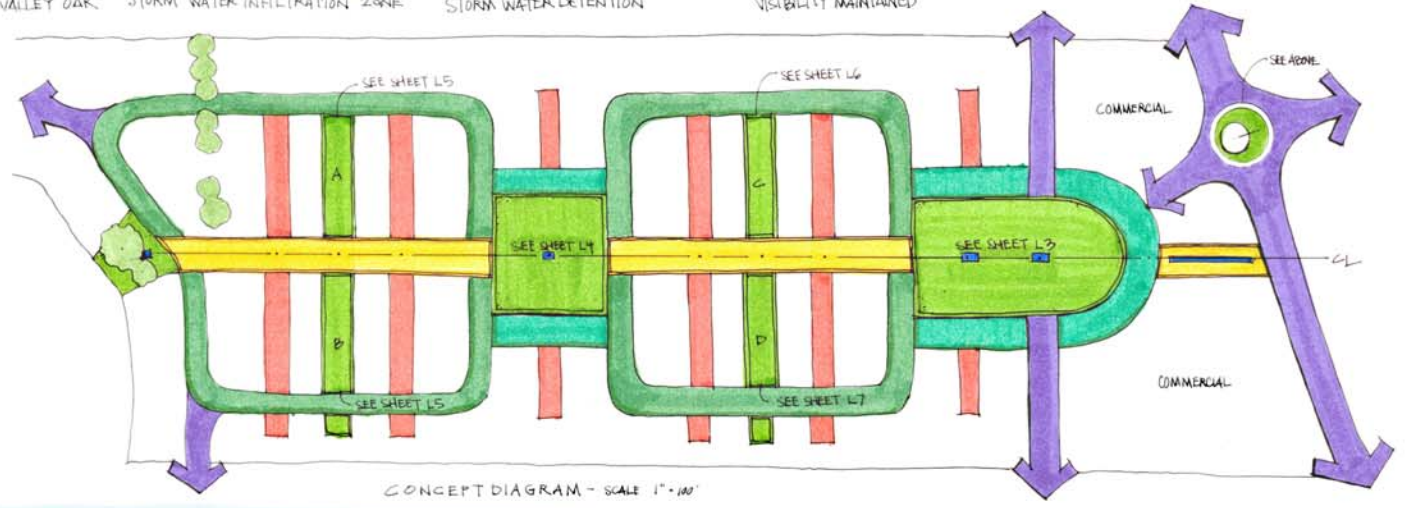


THE GARDENS AT GARDEN'S GATE CONCEPT:

The outdoor spaces at **Garden's Gate** build upon traditional garden design elements to create an intensive garden environment for the enjoyment and health of its inhabitants with ample opportunities for a diverse range of outdoor experiences. The feeling created at the **Garden's Gate** development is one of houses within a garden as opposed to mere landscaping around a new housing project.

The **street grid pattern** encouraged the use of an **axial alignment** as a means of organization with **focal points** punctuating the outdoor rooms. A consistent cross slope allows for the further articulation of space through a series of levels and the utilization of stairs, ramps, walls and terraced areas. Transitions between spaces allows for the continual unfolding of the garden experience.



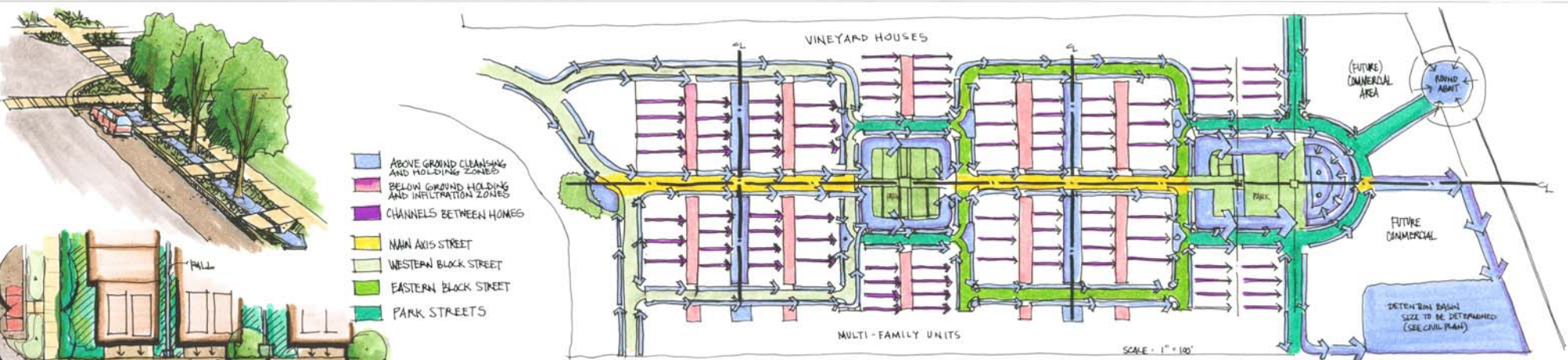
Water is used as a unifying element throughout the complex. A fountain system punctuates the axis and links the parks together, both literally and metaphorically, supplied by a horizontal well drilled into the hill to the west (volume of source to be determined). The source drops and collects in a basin below the existing oak stand at the hillside garden. The supply is piped underground and pressurized by gravity

as it flows to Central Square where it re-emerges through a small nozzle and progresses through the space in a series of pools. The water recollects here and is again transported underground to the playing fields, where it once again rises to the surface and continues down the allee to the

commercial area at State Street before being re-circulated via a solar powered pump featured at the terminus.

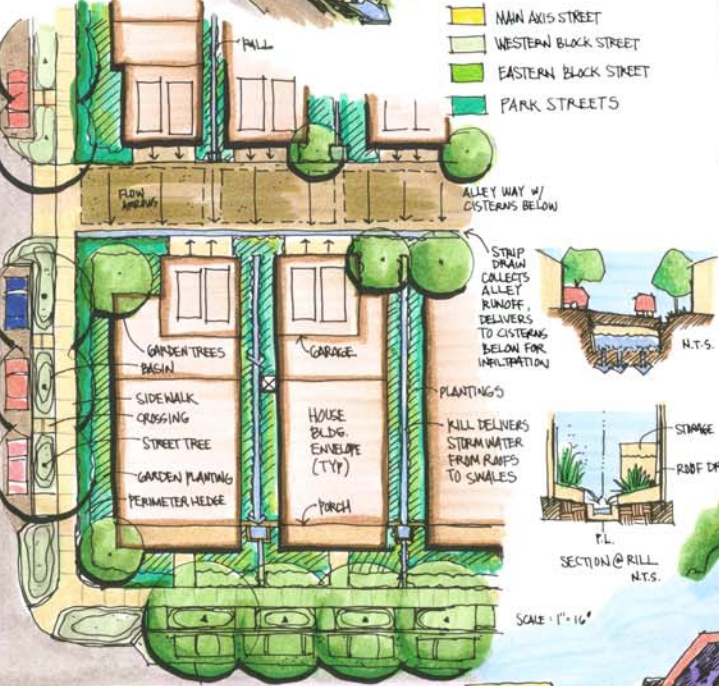
The intensive gardens are an integral component of the high-density development, designed to inspire living and give people a place to go out of doors. Social development occurs within these community gardens, as does inward reflection and outward activity. The gardens inspire a healthy lifestyle, encouraging pedestrian usage by creating interesting sidewalk experiences with seasonal variation. The gardens bring a human quality to the development that isn't achieved with more typical mow and blow type landscapes, making this new community unique. **The Garden's at Garden's Gate** create the sense of place and community people are looking for in their modern lives, without the added trouble and expense of creating it for themselves. We invite you to step through the gateway now...

File Ke - Conceptual Landscape Plans C 061201

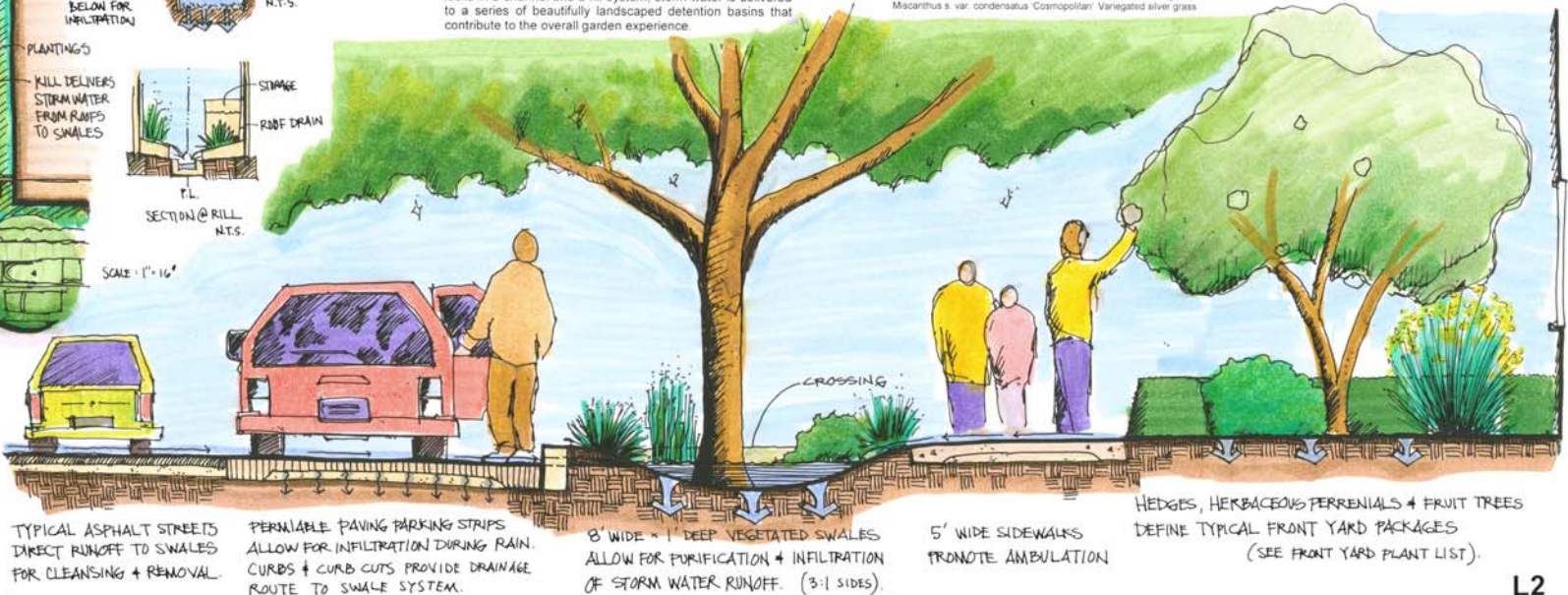


STORM WATER CONCEPT:
 A complex system of surface waterways harkens traditional 'flood irrigation' techniques of the past, only now utilized for the ecologically sensitive treatment and slow removal of runoff from the development. This interconnected series of rain gardens channel storm water while glorifying the process of gravitational flow, allowing for (1) retention to prevent flooding downstream (2) purification through scouring and (3) infiltration within the basins themselves. Through a series of vegetated swales closely resembling locks in a channel and a rill system, storm water is delivered to a series of beautifully landscaped detention basins that contribute to the overall garden experience.

- | | | | |
|---|---|--|---|
| <p>GRASSES</p> <ul style="list-style-type: none"> Mulinbergia rigens Festuca californica 'Philly Silver' Calamagrostis foliosa Calamagrostis x acutiflora 'Kari Foerster' Slopa gigantea Molinia caerulea subsp. Arundin 'Skyracer' Deschampsia cespitosa Panicum virgatum 'Warrior' Carex tumulicola Miscanthus transhorrissonensis Miscanthus sinensis 'Sarabande' Miscanthus sinensis var. condensatus Miscanthus s. var. condensatus 'Cosmopolitan' | <ul style="list-style-type: none"> Deer grass Phil's silver California fescue Mendocino reed grass Feather reed grass Giant sedge Moor grass Hair grass Berkely sedge Switch grass Evergreen miscanthus Japanese silvergrass Japanese silver grass Variagated silver grass | <p>STREET TREES</p> <ul style="list-style-type: none"> Acer rubrum 'Morgan' Catalpa bignonioides 'Aurea' Chionanthus retusus Quercus shumardii Tilia tomentosa | <ul style="list-style-type: none"> Western block street tree Plaza tree Parkside street tree Main axis street tree Eastern block street tree |
|---|---|--|---|



- | | |
|--|--|
| <p>SWALE SHRUBS</p> <ul style="list-style-type: none"> Carpenteria californica Cercia occidentalis Rhamnus californica Sambucus mexicana Sambucus racemosa Ribes sanguineum 'Elk River Red' Ribes sanguineum 'Inverness White' Symphoricarpos albus Symphoricarpos albus laevigatus Rosa californica Myrica californica Calycanthus occidentalis Philadelphus lewisii californica 'Majorie Schmitz' Philadelphus lewisii californica 'Covelo' | <ul style="list-style-type: none"> Bush anemone Western redbud Coffeeberry Blue elderberry Purple elderberry Red flowering currant White flowering currant Snowberry Snowberry California rose Wax myrtle Western spice bush Western mock orange Western mock orange |
|--|--|



TYPICAL ASPHALT STREETS DIRECT RUNOFF TO SWALES FOR CLEANSING + REMOVAL.

PERMEABLE PAVING PARKING STRIPS ALLOW FOR INFILTRATION DURING RAIN. CURBS + CURB CUTS PROVIDE DRAINAGE ROUTE TO SWALE SYSTEM.

8' WIDE x 1' DEEP VEGETATED SWALES ALLOW FOR PURIFICATION + INFILTRATION OF STORM WATER RUNOFF. (3:1 SIDES).

5' WIDE SIDEWALKS PROMOTE AMBULATION

HEDGES, HERBACEOUS PERENNIALS + FRUIT TREES DEFINE TYPICAL FRONT YARD PACKAGES (SEE FRONT YARD PLANT LIST).

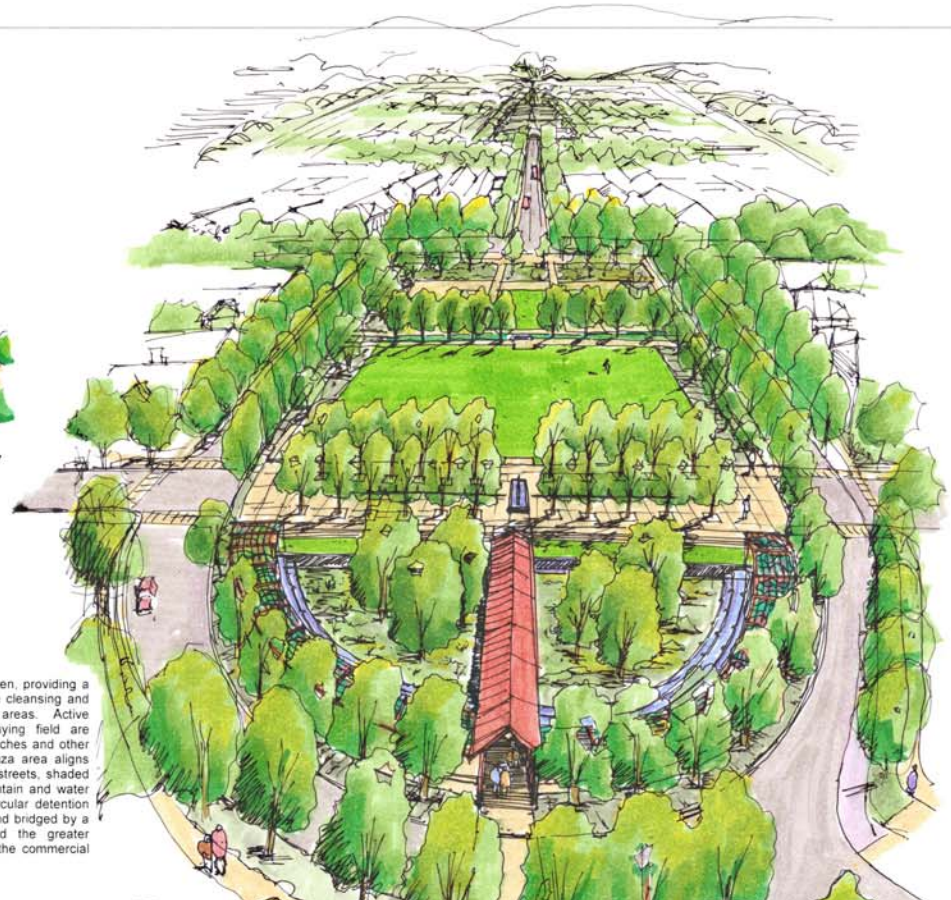
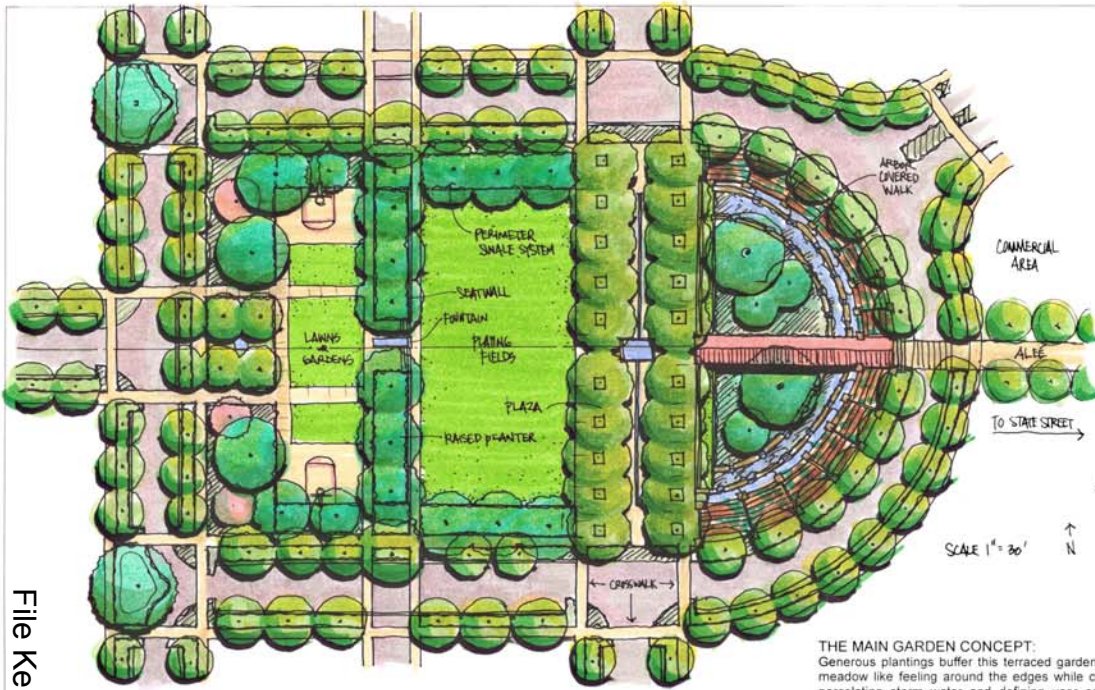
L2

Garden's Gate | STORM WATER MANAGEMENT

Schematic Design

LUCAS & LUCAS landscape architecture
 407 Terrace Boulevard Healdsburg, CA | 95448 | T 707.431.2790 F 707.431.2791

Client: Ukiah Land LLC
 Address: South State Road, Ukiah, CA 95482



THE MAIN GARDEN CONCEPT:
 Generous plantings buffer this terraced garden, providing a meadow like feeling around the edges while cleansing and percolating storm water and defining user areas. Active recreation such as basketball and a playing field are integrated into the meadows, along with benches and other passive use areas. A paved multi-use plaza area aligns north and south with the commercial cross streets, shaded by grated street trees and cooled by a fountain and water spouts for playing. Views into the semi-circular detention area, surrounded by a vine-covered arbor and bridged by a covered walk, link the neighborhood and the greater community of Ukiah, directly connected to the commercial area along the main axis.

PARK TREES

- | | | | |
|--------------------------------------|---------------------|--------------------------------------|---------------------------|
| Acer pseudoplatanus 'Peugeot pink' | Sycamore maple | Magnolia x soulangeana 'Lemon' | Saucer magnolia |
| Acer capillipes | Maple | Magnolia denudata | Yulan magnolia |
| Acer rubrum 'Morgan' | Red maple | Magnolia Elizabeth | Yellow magnolia |
| Catalpa bignonioides 'Aurea' | Golden catalpa | Magnolia campbelli 'Charles raffill' | Magnolia |
| Pyrus salicifolia 'Argentea pendula' | Weeping silver pear | Cornus x 'Eddie's white wonder' | Dogwood |
| Chionanthus retusus | Fringe tree | Cornus kusa 'Saton' | Japanese dogwood |
| Parrotia persica | Persian parrotia | Cornus mas | Cornelian dogwood |
| Michelia doltsopa | Michelia | Halesia monticola | Silverbell |
| Magnolia wilsonii | Wilson magnolia | Halesia caroliniana 'Rubra' | Pink flowering silverbell |
| Cercodiphyllum japonicum | Katsura tree | Koelerutera paniculata | Golden Rain Tree |
| | | Malus hupehensis 'Red Jade' | Crabapple |
| | | Quercus shumardi | Shumard oak |



SECTION - NOT TO SCALE

Garden's Gate | MAIN PARK PLAN

Schematic Design

L3

Client: Ukiah Land LLC
 Address: South State Road, Ukiah, CA 95482

LUCAS & LUCAS landscape architecture
 407 Terrace Boulevard Healdsburg, CA | 95448 | T 707.431.2790 F 707.431.2791



- PARK SHRUBS**
- Ceanothus barbinervis
 - Hydrangea paniculata 'Grandiflora'
 - Hydrangea paniculata 'Pink Diamond'
 - Hydrangea quercifolia 'Snow Queen'
 - Viburnum sargentii 'Onondaga'
 - Viburnum burkwoodii 'Anne Russell'
 - Viburnum cinnamomifolium
 - Viburnum plicatum 'Fuj'
 - Viburnum plicatum 'Mariesii'
 - Garrya elliptica 'James Roof'
 - Philadelphus inebriatus
 - Philadelphus virginialis
 - Physocarpus opulifolius 'Darts Gold'
 - Eucryphia Mt. Usher
 - Eucryphia cordifolia
 - Chaenomeles x superba 'Texas Scarlet'
 - Chaenomeles x superba 'Jet Trail'
 - Callicarpa 'Profusion'
 - Buddleia nigra
 - Cistus populifolius
 - Cistus 'Elma'
 - Cistus 'Silver Pink'
 - Cistus 'Snow White'



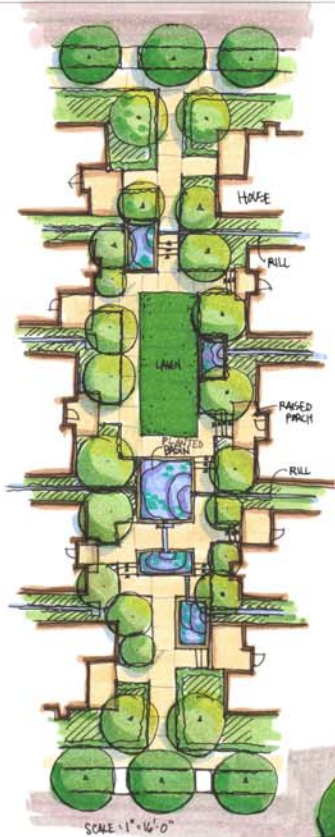
CENTRAL SQUARE GARDEN CONCEPT:
 The central square is an intimate public garden reminiscent of a European style park. The central axis is pronounced with views up and down the main street. Stairs ascend the eight-foot climb from end to end, with ramps accessing each level from the side streets. A central two-tiered fountain spills over a four-foot wall that divides the park into two main levels. Vine covered arbors provide shade for picnicking with green lawns adjacent to each outdoor room. The entire garden space is buffered from the street by a surround of meadow like swales, achieving an open yet intimate feeling, this space invites all to enter or just take a glimpse while returning home via car or foot.

- SWALE TREES**
- Alnus rotundifolia
 - Alnus rubra
 - Quercus agrifolia
 - Nyssa sylvatica
 - Acer macrophyllum
 - Acer circinatum
 - Aesculus californica
 - White alder
 - Oregon alder
 - Coast live oak
 - Chinese sour gum
 - Black gum
 - Oregon maple
 - Vine maple
 - California buckeye

- LIMBERS**
- Rosa 'Mendocino Gothic'
 - Rosa 'Mme Alfred Carriere'
 - Rosa 'Blush Noisette'
 - Rosa glauca
 - Rosa 'Burbon Queen'
 - Rosa 'Kiftgate'
 - Rosa montana 'Elizabeth'
 - Rosa montana 'Rubens'
 - Clematis viticella 'Polish Spirit'
 - Clematis viticella 'Alba Luxuriant'
 - Clematis tangutica 'Golden Harvest'
 - Clematis temifolia
 - Clematis integrifolia
 - Clematis kolomikita
 - Clematis anomala subsp. Petolaris

- Climbing rose
- Climbing rose
- Shrub rose
- Shrub rose
- Climbing rose
- Climbing rose
- Clematis
- Spring flowering clematis
- Summer flowering clematis
- White flowering clematis
- Late summer flowering clematis
- Sweet autumn clematis
- Akebia
- Kiwi
- Climbing hydrangea





COURTYARD CONCEPT:
 The four courtyard gardens are located within the center of each primary block. Each court has a different layout aimed to attract different people to each neighborhood. These sub-axis gardens are defined with hedges and planted with a number of edible plants. Changes in levels and the use of water accentuate the garden feeling within. Through view portals, opportunities exist to see from one court to another. Structured water basins flushed with reclaimed water during the dry season and rain in the winter add interest to these highly architectural yet relaxed environments.

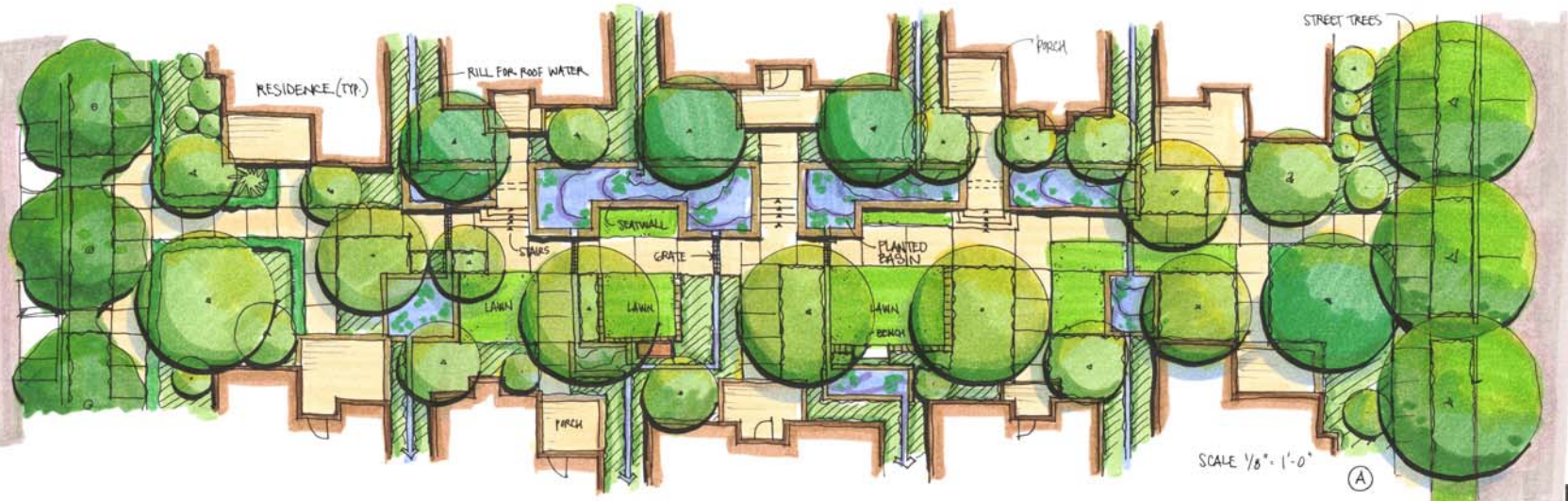
The multi-family housing courtyards along the southern property line are defined in a similar structured yet loose fashion, utilizing the same planting concept within this arena.

HOME GARDEN SHRUBS

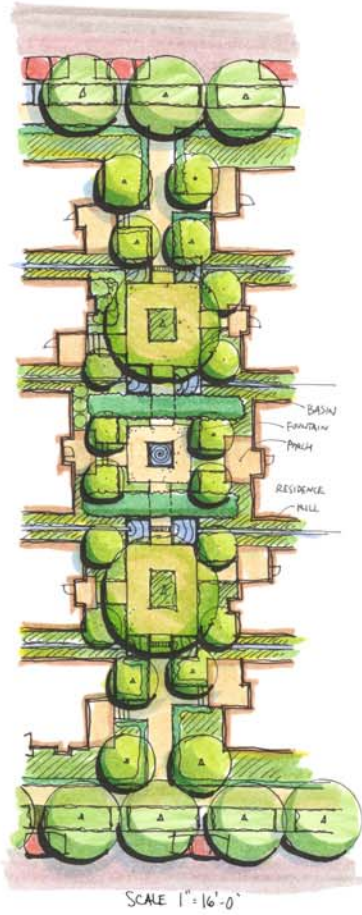
- | | |
|---|------------------------------|
| <i>Clethra alnifolia</i> 'Ruby' | Sweetpire |
| <i>Clethra alnifolia</i> 'Soleil candles' | Sweetpire |
| <i>Hydrangea serrata</i> 'Preciosa' | Hydrangea |
| <i>Hydrangea aspera villosa</i> | Hydrangea |
| <i>Hydrangea arborescens</i> 'Annabelle' | Hydrangea |
| <i>Viburnum carlesii</i> 'Aurora' | Sweet viburnum |
| <i>Viburnum plicatum</i> 'Summer Snowflake' | Double file viburnum |
| <i>Viburnum x Conoy</i> | Hybrid viburnum |
| <i>Magnolia stellata</i> 'waterlily' | Star magnolia |
| <i>Physocarpus opulifolius</i> 'Darts Gold' | Nine bark |
| <i>Physocarpus</i> 'Diablo' | Purple leaf ninebark |
| <i>Ceanothus</i> 'Glorie de Versailles' | Deoducus ceanothus |
| <i>Ceanothus</i> 'Marie Simon' | Pink flowering ceanothus |
| <i>Ceanothus</i> 'Topaz' | Deoducus ceanothus |
| <i>Camellia sasanqua</i> 'Cultivar' | Camellia |
| <i>Azara microphylla</i> 'Variegata' | Azara |
| <i>Sambucus nigra</i> 'Cultivar' | Elderberry |
| <i>Itea ilicifolia</i> | Holly leaved itea |
| <i>Teucrium fruticosum</i> 'azurisi' | Bush germander |
| <i>Teucrium chamaedrys</i> | Box germander |
| <i>Carpenteria californica</i> 'Elizabeth' | Double flowered bush anemone |
| <i>Lonicera nitida</i> 'Magnum' | Box leaf honeysuckle |
| <i>Hypericum androsaemum</i> | Box leaf honeysuckle |
| <i>Hypericum kouyotense</i> | Hypericum |
| <i>Hydrangea paniculata</i> 'Limelight' | Panicle hydrangea |
| <i>Hydrangea quercifolia</i> 'Sikes Dwarf' | Dwarf hydrangea |
| <i>Euonymus sachalinensis</i> | Asian spindle shrub |
| <i>Deutzia gracilis</i> 'Chardonney Pearls' | Deutzia |
| <i>Deutzia kalmiflora</i> | Deutzia |
| <i>Deutzia</i> 'Pink A Boo' | Deutzia |
| <i>Cistus</i> 'Benhels White' | Rockrose |
| <i>Cistus</i> 'Anne Palmer' | Rockrose |
| <i>Cistus x oblongifolius</i> | Rockrose |
| <i>Berberis thunbergia</i> 'Gold Ring' | Berberis |
| <i>Berberis</i> 'Royal Cloak' | Berberis |

HEDGE SHRUBS

- | | |
|---|----------------------|
| <i>Teucrium fruticosum</i> 'Select' | Bush germander |
| <i>Teucrium chamaedrys</i> | Box germander |
| <i>Lonicera nitida</i> | Box leaf honeysuckle |
| <i>Myrica californica</i> | Wax myrtle |
| <i>Taxus x Hicksii</i> | Yew |
| <i>Taxus</i> 'Repanders' | Spreading yew |
| <i>Rosmarinus officinalis</i> 'Mrs Reeds Dark Blue' | Rosemary |



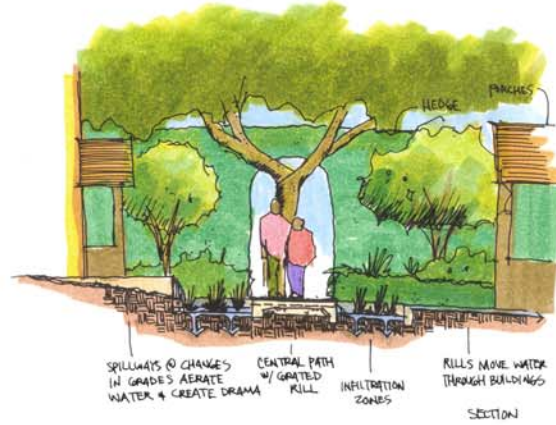
L5

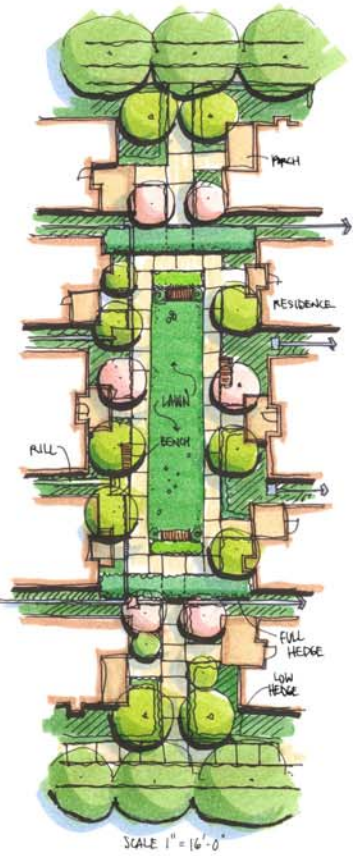


PLANTING CONCEPT (STRUCTURED INFORMALITY)

In the course of time, the art of gardening has moved between two extremes: from the highly architectural designs of Italy and France to the comparative freedom of the natural garden here in the twenty first century. Currently however, we see a synthesis of the two traditions: structured layouts overlaid and tempered by ebullient planting. The device most often used successfully is a series of enclosures, divided by hedges and generously planted in a variety of schemes.

Part of the popularity of this style of garden is due to the ease with which it can be adapted to different sites on quite different scales. Its visual appeal lies in its use of apparently paradoxical elements: the framework provides a reassuring sense of permanence while the limited lifetime of flowers and shrubs within conveys a feeling of transience; the controlled outlines are foil to natural planting; and color and delicacy are intensified by solid green backgrounds. The garden expresses a sense of understanding between gardener and the environment, in the way that nature is both controlled, yet allowed magnificent expression.





HOME GARDEN TREES

- | | |
|-------------------------------|-------------------------|
| Magnolia liliiflora 'Nigra' | Lily magnolia |
| Styrax japonica | Japanese snowbell |
| Styrax japonica 'Pink Chimes' | Pink flowering snowbell |
| Acer carolinianum | Vine maple |
| Acer griseum | Paperbark maple |
| Acer palmatum 'Cultivari' | Japanese maple |
| Chionanthus virginicus | Eastern fringe tree |
| Franklinia alatamaha | Franklinia |
| Laburnum x watereri 'Vossii' | Laburnum |
| Davidia involucre | Dove tree |

HEDGE TREE

- | | |
|------------------|----------------------|
| Acer campestre | European hedge maple |
| Carpinus betulus | Hornbeam |
| Fagus sylvatica | European beech |



PERENNIALS

- | | |
|-------------------------------|--------------------|
| Campanula lactiflora | Bell flower |
| Nepeta 'Walker's Low' | Catmint |
| Nepeta 'Poolbank' | Upright nepeta |
| Eupatorium purpureum | Joe pye weed |
| Euphorbia longifolia | Spurge |
| Euphorbia 'Dianna Hybrid' | Spurge |
| Helianthus hirsutus | Hairy sunflower |
| Helianthus 'Lemon Queen' | Sunflower |
| Rhynchosia cultivars | Torch lily |
| Aster sp. | Michaelmas daisies |
| Achilles cultivars | Yarrow |
| Antennaria 'Susanne Mitchell' | Antennas |
| Lobelia fulva | Lobelia |
| Crambe cordifolia | Giant sea kale |
| Echinacea purpurea | Cone flower |
| Geranium 'Brookside' | Cranesbill |
| Geranium 'Orion' | Cranesbill |
| Geranium Mavis Simpson | Cranesbill |
| Helenium cultivars | Helenaflower |
| Monarda 'Jacob Cline' | Beesbalm |